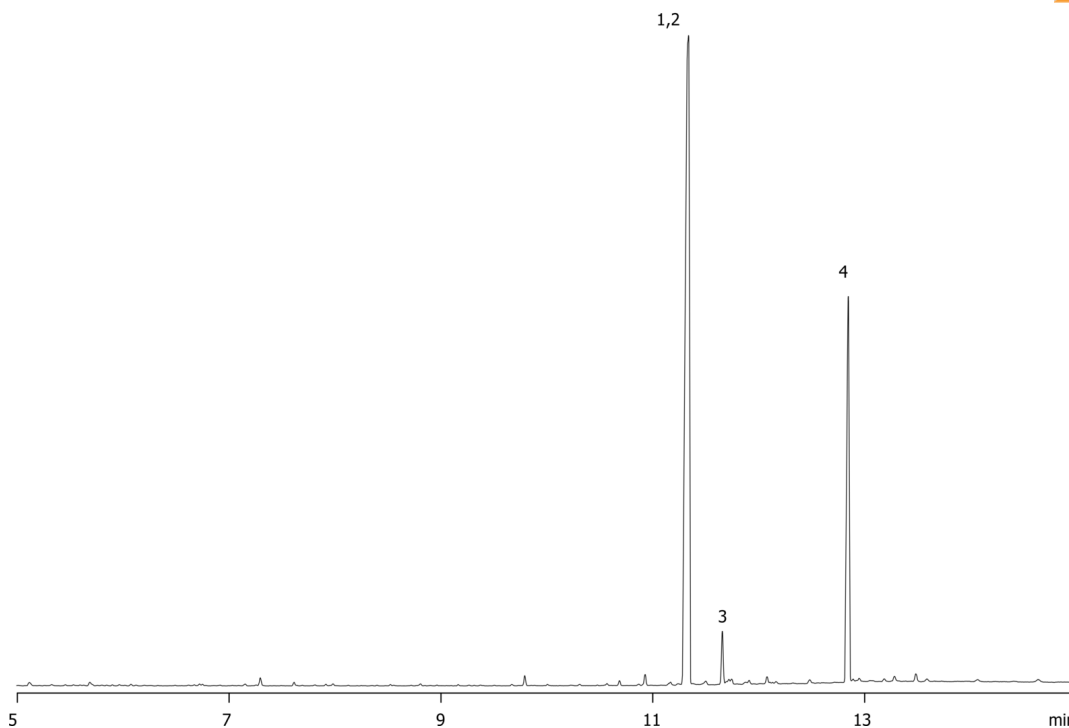


THC on ZB-5**Column:** Zebtron[™] ZB-5, GC Cap. Column 15 m x 0.25 mm x 0.25 µm, Ea**Phase:** 5% Phenyl 95% Dimethylpolysiloxane**Dimensions:** 15 meters x 0.25 mm x 0.25 µm**Order No:** 7EG-G002-11**Oven Profile:** 70°C to 120°C at 10°C/min to 280°C at 20°C/min for 2 min**Carrier Gas:** Constant Flow Helium, 1.1 mL/min**Injection:** Split 10:1 1 µL @ 250°C**Detection:** Mass Selective (MSD) (180°C)**Analyst Note:** All analytes were 66.7ng on column except 11-nor-delta-9-THC at 33.3ng.

14787

**Products used in this application:****ANALYTES:**

- 1 Carboxy-delta-9-THC-TMS-d3
- 2 Carboxy-delta-9-THC-TMS
- 3 Cannabinol-TMS
- 4 11-nor-9-THC-TMS

