

**Aromatic Amines on ZB-1701**

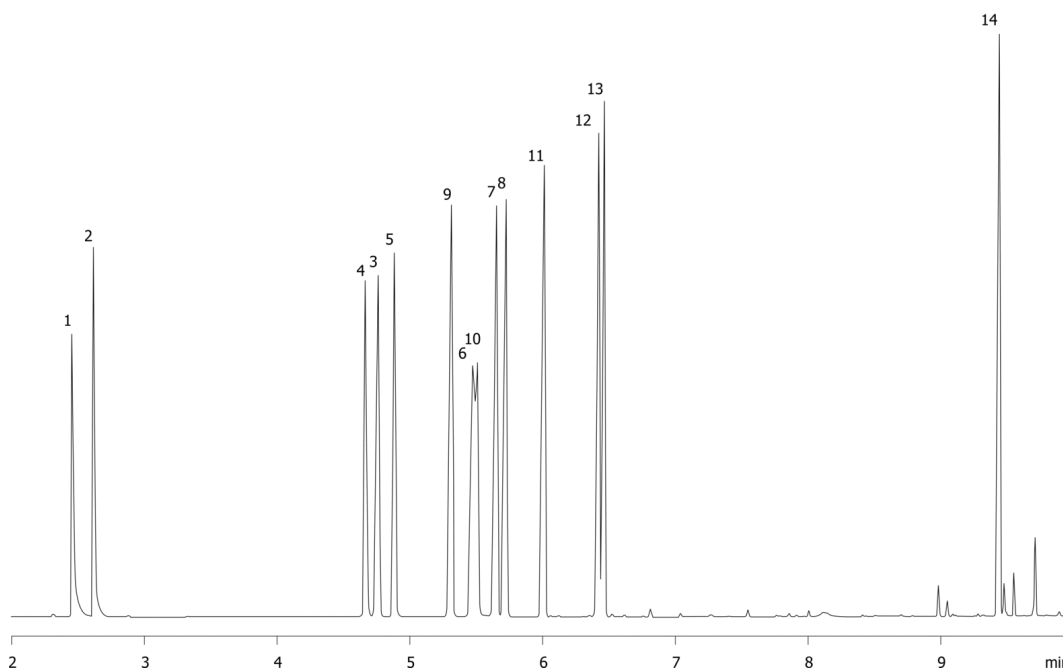
**Column:** Zebtron™ ZB-1701, GC Cap. Column 30 m x 0.25 mm x 0.25 µm, Ea  
**Phase:** 14% Cyanopropylphenyl 86% Dimethylpolysiloxane  
**Dimensions:** 30 meters x 0.25 mm x 0.25 µm  
**Order No:** 7HG-G006-11  
**Oven Profile:** 60°C for 1min to 110°C at 30°C/min to 135°C at 9°C/min to 260°C at 30°C/min for 2min  
**Carrier Gas:** Constant Flow Helium, 1 mL/min  
**Injection:** Split 15:1 1 µL @ 220°C  
**Detection:** Mass Selective (MSD) (180°C)  
**Detector Info:** full scan

**Analyst Note:** Analytes are at 1.58mg/mL each.

14789



Products used in this application:



## Aromatic Amines on ZB-1701

### ANALYTES:

- 1 Piperidine
- 2 2-Methylpiperidine
- 3 Aniline
- 4 Benzylamine
- 5 alpha-Phenylethylamine
- 6 N-Methylaniline
- 7 m-Toluidine
- 8 o-Toluidine
- 9 N,N-Dimethylaniline
- 10 beta-Phenylethylamine
- 11 N-Ethylaniline
- 12 2,4-Dimethylaniline
- 13 N,N-Diethylaniline
- 14 Dibenzylamine

