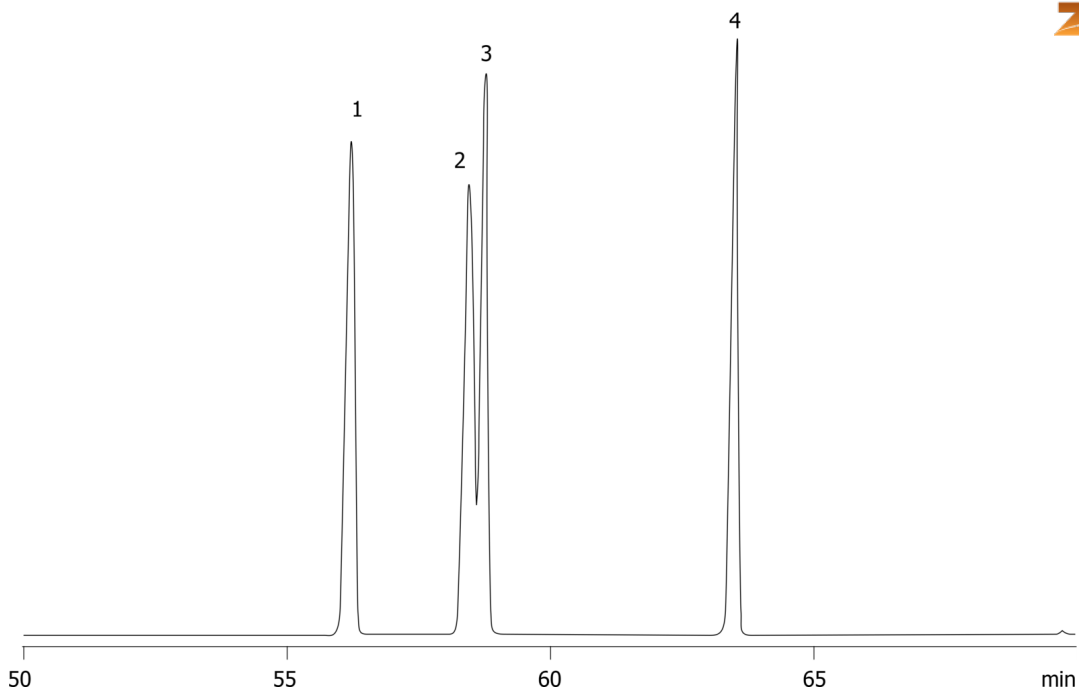


**BTEX ZB1 100x0.25x0.5**

**Column:** Zebron<sup>™</sup> ZB-1, GC Cap. Column 100 m x 0.25 mm x 0.50  $\mu$ m, Ea  
**Phase:** 100% Dimethylpolysiloxane  
**Dimensions:** 100 meters x 0.25 mm x 0.5  $\mu$ m  
**Order No:** 7MG-G001-17  
**Oven Profile:** 35°C for 14 min to 60°C at 1.1°C/min for 19 min to 280°C at 2°C/min for 5 min.  
**Carrier Gas:** Constant Flow Helium, 1.4 mL/min  
**Injection:** Split 20:1 0.2  $\mu$ L @ 225°C  
**Detection:** Flame Ionization (FID) (300°C)  
**Analyst Note:** Portion of BTEX solution chromatogram showing near full resolution of para- and meta-xylene.

14901

**ANALYTES:**

- 1 Ethylbenzene
- 2 m-Xylene
- 3 p-Xylene
- 4 o-Xylene

**Products used in this application:**