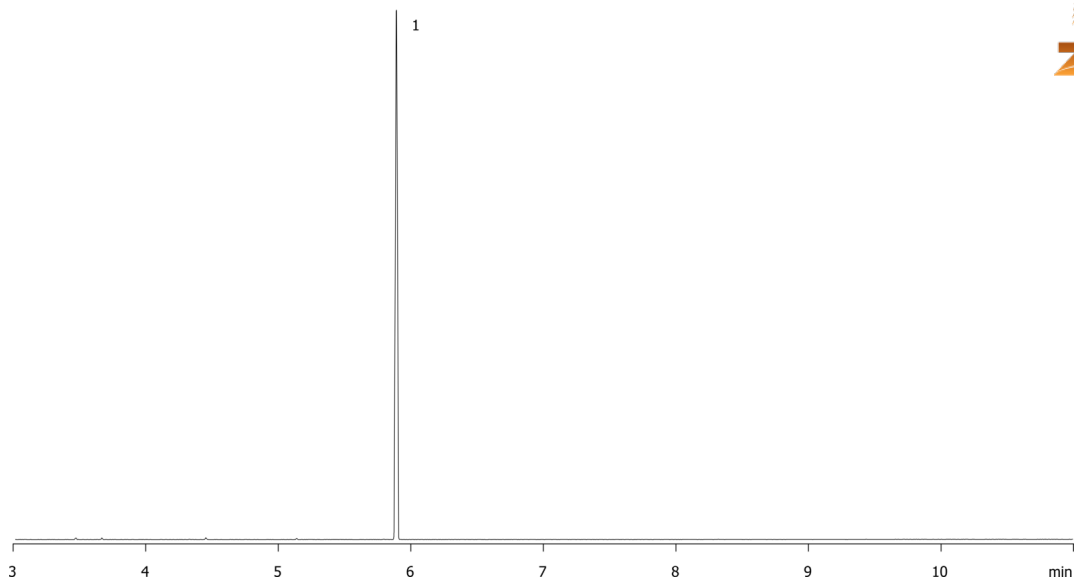


**PCP on ZB5ms 20x0.18x0.18**

**Column:** Zebtron™ ZB-5MS, GC Cap. Column 20 m x 0.18 mm x 0.18 µm, Ea  
**Phase:** 5% Phenyl-Arylene 95% Dimethylpolysiloxane  
**Dimensions:** 20 meters x 0.18 mm x 0.18 µm  
**Order No:** 7FD-G010-08  
**Oven Profile:** 90°C to 220°C at 25°C/min to 250°C at 10°C/min to 280°C at 25°C/min for 2 min  
**Carrier Gas:** Constant Flow Helium, 1.1 mL/min  
**Injection:** split 20:1 1 µL @ 250°C  
**Detection:** Mass Selective (MSD) (180°C)

15566

**Products used in this application:****ANALYTES:****1** PCP