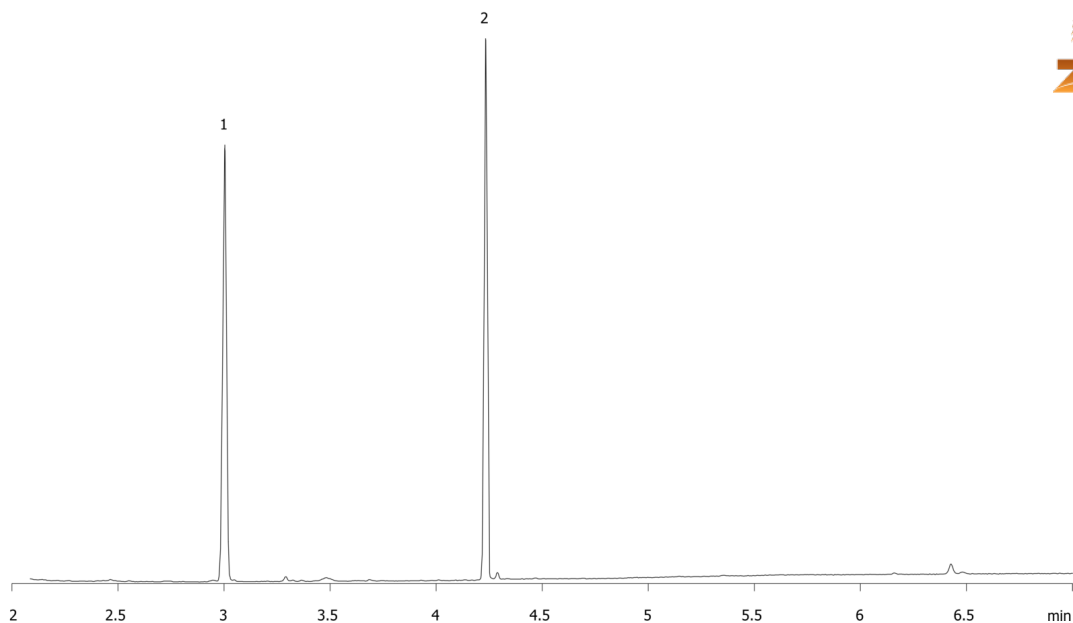


**THC (BSTFA Derivatization) on ZB1ms 20x0.18x0.18****Column:** Zebtron<sup>™</sup> ZB-1MS, GC Cap. Column 20 m x 0.18 mm x 0.18  $\mu$ m, Ea**Phase:** 100% Dimethylpolysiloxane**Dimensions:** 20 meters x 0.18 mm x 0.18  $\mu$ m**Order No:** 7FD-G011-08**Oven Profile:** 220°C to 320°C at 20°C/min for 2min**Carrier Gas:** Constant Flow Helium, 0.8 mL/min**Injection:** Split 10:1 1  $\mu$ L @ 290°C**Detection:** Mass Spectrometer (MS) (240°C)

15572

**Products used in this application:****ANALYTES:**

- 1 delta-9-THC-TMS
- 2 Carboxy-delta-9-THC-TMS

