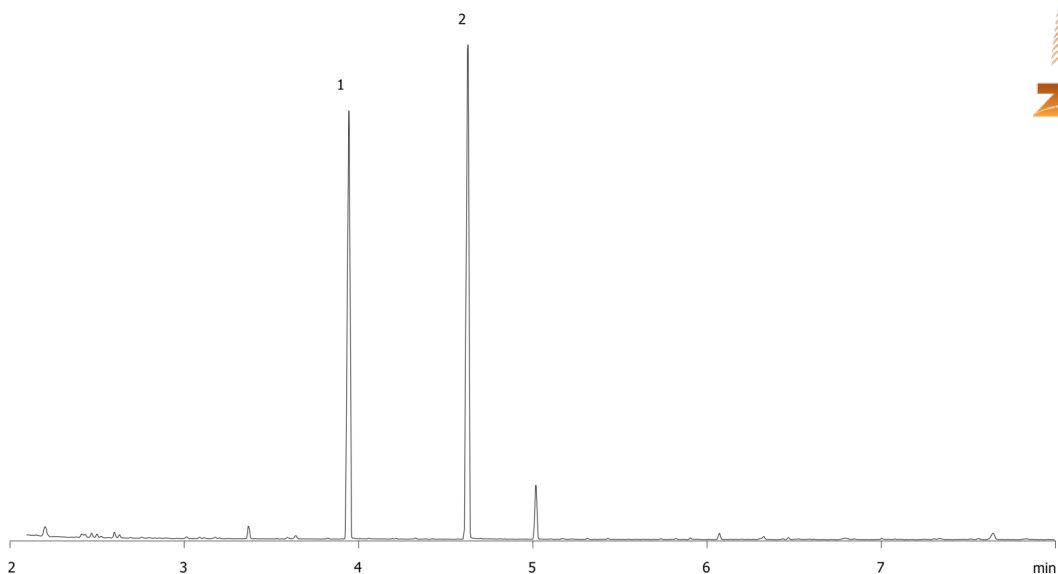


Amphetamines (PFPA Derivatization) on ZB1ms 20x0.18x0.18**Column:** Zebtron[™] ZB-1MS, GC Cap. Column 20 m x 0.18 mm x 0.18 μ m, Ea**Phase:** 100% Dimethylpolysiloxane**Dimensions:** 20 meters x 0.18 mm x 0.18 μ m**Order No:** 7FD-G011-08**Oven Profile:** 80°C to 300°C at 20°C/min**Carrier Gas:** Constant Flow Helium, 0.8 mL/min**Injection:** Split 10:1 1 μ L @ 290°C**Detection:** Mass Selective (MSD) (240°C)

15574

**Products used in this application:****ANALYTES:**

- 1 Amphetamine (PFP)
- 2 Methamphetamine-PFP

