

# HPLC Application

ID No.: 15930

## Basic Compounds at High pH: Gemini 10u C18 Axia Packed 50x21.2mm vs. Competitive 5u Column 50x19mm

**Column:** Gemini® 10 µm C18 110 A, LC Column 50 x 21.2 mm, AXIA™ Packed, Ea

**Dimensions:** 50 x 21.2 mm ID

**Order No:** 00B-4436-P0-AX

**Elution Type:** Gradient

**Eluent A:** 95:5 50mM NH<sub>4</sub>HCO<sub>3</sub> (pH 10.0) / Acetonitrile

**Eluent B:** 5:95 50mM NH<sub>4</sub>HCO<sub>3</sub> (pH 10.0) / Acetonitrile

Gradient Profile:	Step No.	Time (min)	Pct A	Pct B
	1	0	100	0
	2	7	0	100

**Flow Rate:** 30 mL/min

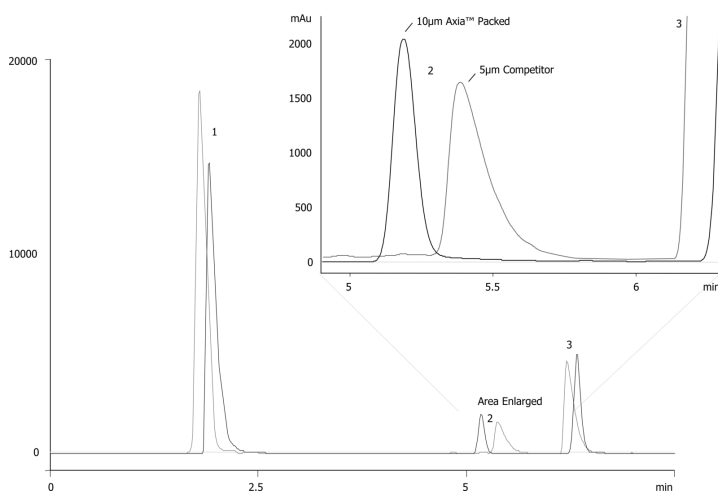
**Col. Temp.:** ambient

**Detection:** UV-Vis Abs.-Variable Wave.(UV) @ 254 nm (ambient)

**Analyst Note:** Comparison of Gemini 10µm C18 Axia Packed column vs. leading 5µm competitive column. Flow rates adjusted to yield the same linear velocity.  
15930 Contact your Technical Representative for more details.



Products used in this application:



### ANALYTES:

- 1 Methacycline
- 2 Triprolidine
- 3 Amitriptyline

