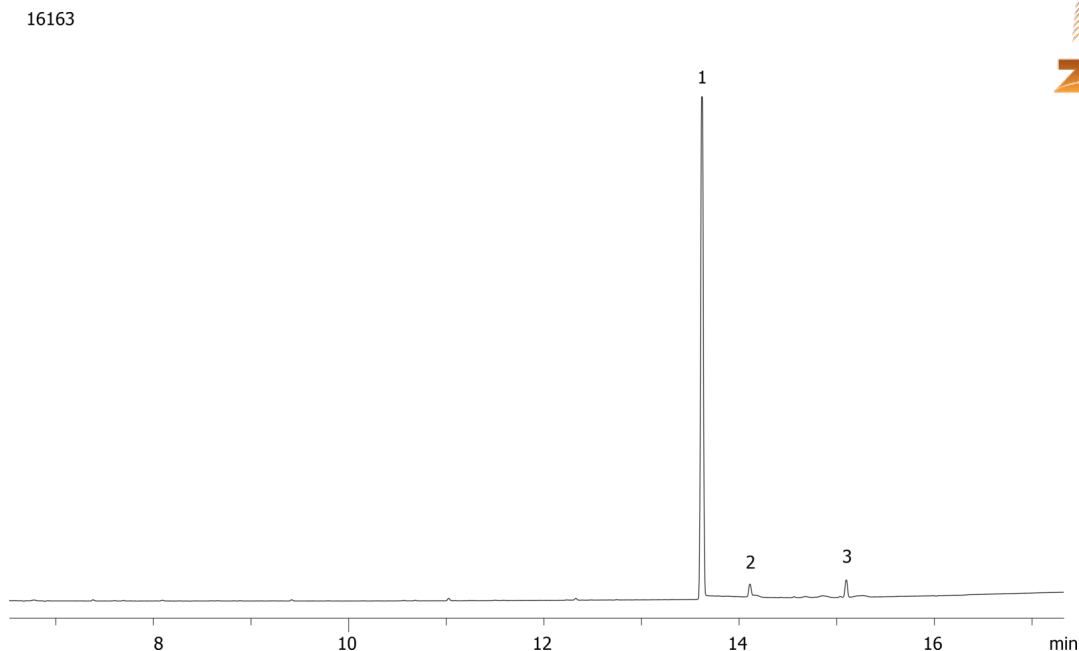


**Low Breakdown of Endrin on ZB-MR1****Column:** Zebron<sup>™</sup> ZB-MultiResidue<sup>™</sup>-1, GC Cap. Column 30 m x 0.32 mm x 0.50  $\mu$ m, Ea**Phase:****Dimensions:** 30 meters x 0.32 mm x 0.5  $\mu$ m**Order No:** 7HM-G016-17**Oven Profile:** 100 °C for 0.5 min to 340 °C at 15 °C/min for 2 min**Carrier Gas:** Constant Flow Helium, 1.6 mL/min**Injection:** Splitless :1 1  $\mu$ L @ 250°C**Detection:** Electron Capture (ECD) (350°C)**Analyst Note:** Analyte was 250 pg on column.**Products used in this application:****ANALYTES:**

- 1 Endrin
- 2 Endrin aldehyde
- 3 Endrin ketone

