

PEGylated Insulin on Jupiter® 300 C4, C18 and Two Experimental Columns

Column: Jupiter® 5 µm C4 300 Å, LC Column 150 x 4.6 mm, Ea

Dimensions: 150 x 4.6 mm ID

Order No: 00F-4167-E0

Elution Type: Gradient

Eluent A: 0.1% TFA and 2% ACN in Water

Eluent B: 70/20% ACN/IPA, 0.08% TFA in Water

Gradient Profile:	Step No.	Time (min)	Pct A	Pct B
	1	0	85	15
	2	25	30	70

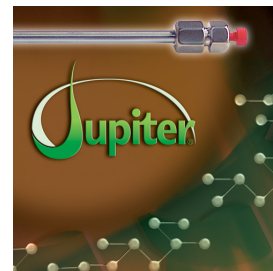
Flow Rate: 1 mL/min

Col. Temp.: 45 °C

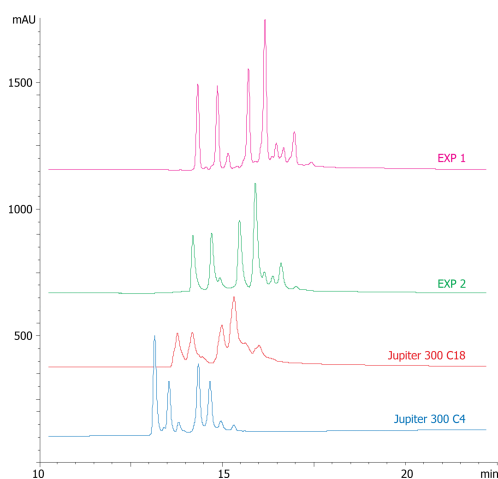
Detection: UV-Vis Abs.-Variable Wave.(UV) @ 214 nm (ambient)

Analyst Note: Reversed phase of PEGylated Insulin run on listed columns. Note the reduced resolution for the Jupiter C18 and EXP 2 column when compared to the Jupiter C4 column. Although it is difficult to visualize, the Jupiter actually has better resolution of PEGylated forms than the EXP 2 column.

16193



Products used in this application:



ANALYTES:

- 1 PEGylated Insulin

