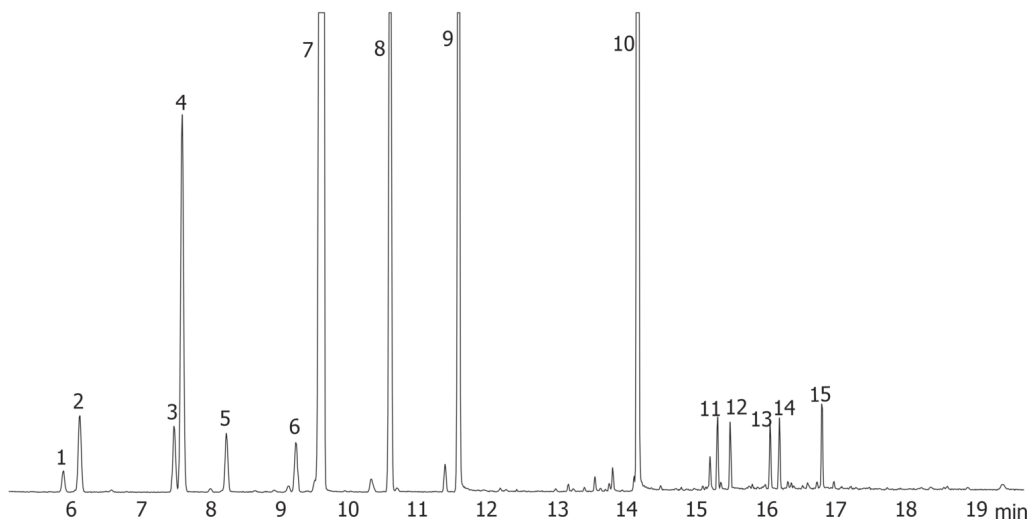


Bergamot Oil on ZB-1

Column: Zebtron™ ZB-1, GC Cap. Column 30 m x 0.25 mm x 0.25 µm, Ea
Phase: 100% Dimethylpolysiloxane
Dimensions: 30 meters x 0.25 mm x 0.25 µm
Order No: 7HG-G001-11
Oven Profile: 60 °C for 6 min to 80 °C at 5 °C/min to 180 °C at 15 °C/min for 3 min

Carrier Gas: Constant Flow Helium, 1.5 mL/min
Injection: On-Column :1 0.1 µL @ 63°C
Detection: Mass Selective (MSD) (240°C)
Analyst Note: The solution analyzed was 1000ppm Bergamot oil in Ethyl acetate

16230

**Products used in this application:**

Bergamot Oill on ZB-1

ANALYTES:

- 1 a-Thujene
- 2 a-Pinene
- 3 Sabinene
- 4 beta-Pinene
- 5 beta-Myrcene
- 6 p-Cymene
- 7 Limonene
- 8 g-Terpinene
- 9 Linalool acetate
- 10 Linalyl acetate
- 11 Neryl acetate
- 12 Geranyl acetate
- 13 b-Caryophyllene
- 14 alpha-Bergamotene
- 15 b-Bisabolene

