

**TMS Sugars on ZB-MR1**

**Column:** Zebtron<sup>™</sup> ZB-MultiResidue<sup>™</sup>-1, GC Cap. Column 30 m x 0.25 mm x 0.25  $\mu$ m, Ea  
**Phase:** Proprietary Pesticides Phase  
**Dimensions:** 30 meters x 0.25 mm x 0.25  $\mu$ m  
**Order No:** 7HG-G016-11  
**Oven Profile:** 200 °C for 6 min.

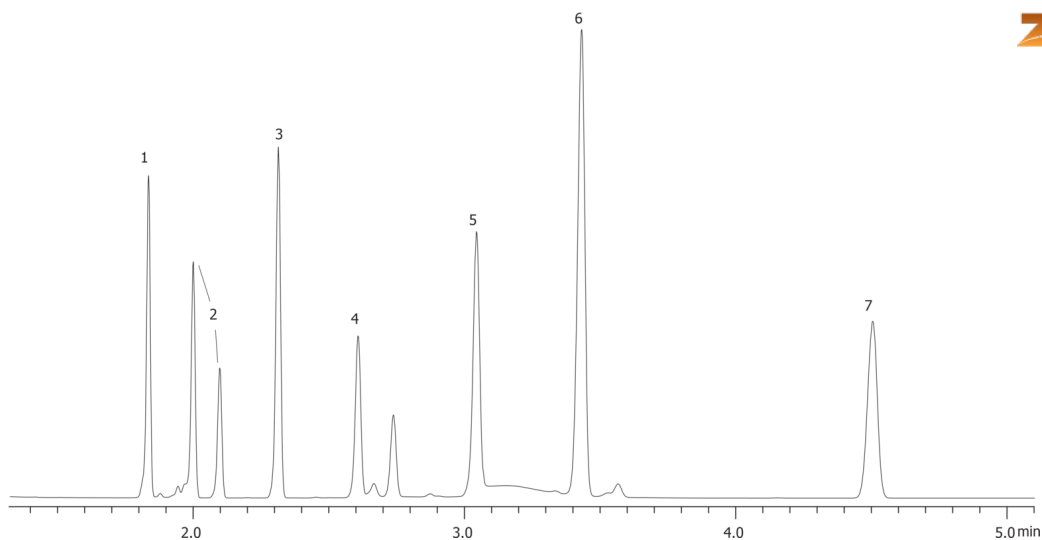
**Carrier Gas:** Constant Flow Helium, 2 mL/min

**Injection:** Split 100:1 1  $\mu$ L @ 225°C

**Detection:** Flame Ionization (FID) (250°C)

**Analyst Note:** Sugar mix concentration 176 ppm. Sample was blown dry and then reconstituted in 100 $\mu$ L of 1:1

16248

**Products used in this application:****ANALYTES:**

- 1 D-(-)-Arabinose
- 2 d-Ribose
- 3 d-Xylose
- 4 D-Mannose
- 5 D-(+)-Galactose
- 6 alpha-d-Glucose
- 7 beta-D-(+)-Glucose

