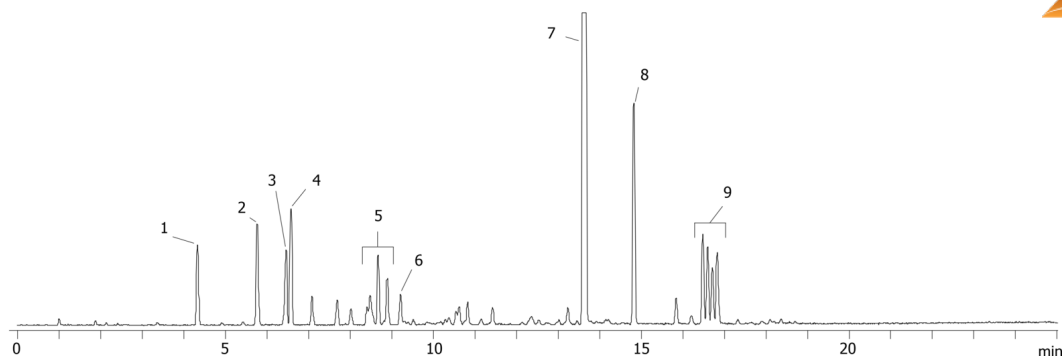


**Sulfur Components in Fuel on ZB-1****Column:** Zebtron<sup>™</sup> ZB-1, GC Cap. Column 30 m x 0.32 mm x 3.00 µm, Ea**Phase:** 100% Dimethylpolysiloxane**Dimensions:** 30 meters x 0.32 mm x 3 µm**Order No:** 7HM-G001-36**Oven Profile:** 50 °C for 1 min to 300 °C @ 10 °C/min for 3 min**Carrier Gas:** Constant Flow Helium, 2 mL/min**Injection:** Split 10:1 1 µL @ 270°C**Detection:** Sulfur (SCD) (320°C)**Analyst Note:** California Phase II Reference Fuel - 30 mg/kg total sulfur**Products used in this application:**

16502

**ANALYTES:**

- 1 Thiophene
- 2 Dimethyldisulfide
- 3 2-Methyl-thiophene
- 4 3-Methyl-thiophene
- 5 C2-thiophenes
- 6 Diethylsulfide
- 7 Dibutyl sulfide
- 8 Benzothiophene
- 9 C1-Benzothiophenes

