

# GC Application

ID No.: 16506

## TPH Diesel Analysis on ZB-1MS

**Column:** Zebtron™ ZB-1MS, GC Cap. Column 20 m x 0.18 mm x 0.18 µm, Ea

**Phase:** 100% Dimethylpolysiloxane

**Dimensions:** 20 meters x 0.18 mm x 0.18 µm

**Order No:** 7FD-G011-08

**Oven Profile:** 75 °C for 1 min to 320 @ 30 °C/min for 3.83 min

**Carrier Gas:** Ramp Pressure Helium, 2.5 mL/min

**Injection:** Splitless :1 1 µL @ 280°C

**Detection:** Flame Ionization (FID) (300°C)

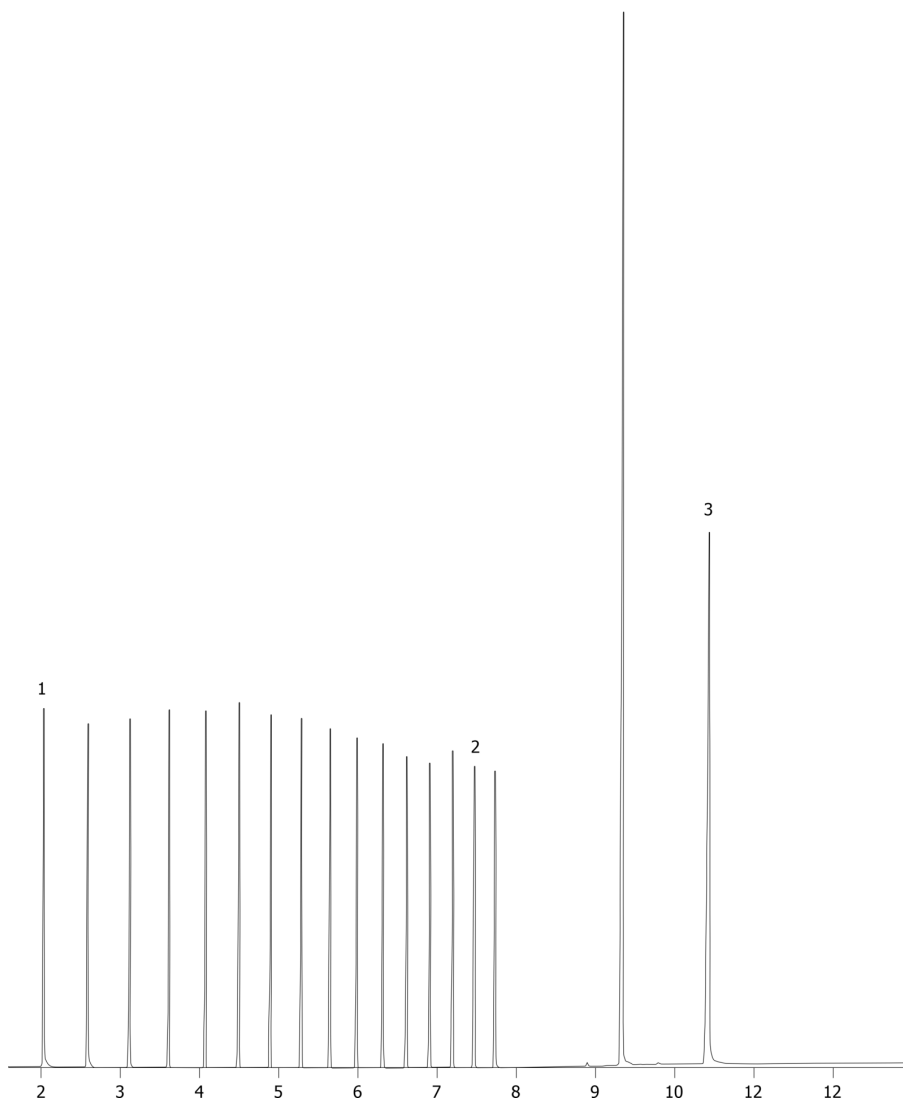
**Analyst Note:** Pressure ramp: 20. for 8 min to 3.0 mL/min @ 2.0 mL/min for 6 min.



Products used in this application:



16506



### ANALYTES:

1 C10

2 C24

©2015 Phenomenex Inc. All rights reserved.

For more information contact your Phenomenex Representative at [info@phenomenex.com](mailto:info@phenomenex.com)



Phenomenex products are available worldwide.

[www.phenomenex.com.cn](http://www.phenomenex.com.cn)

[info@phenomenex.com](mailto:info@phenomenex.com)