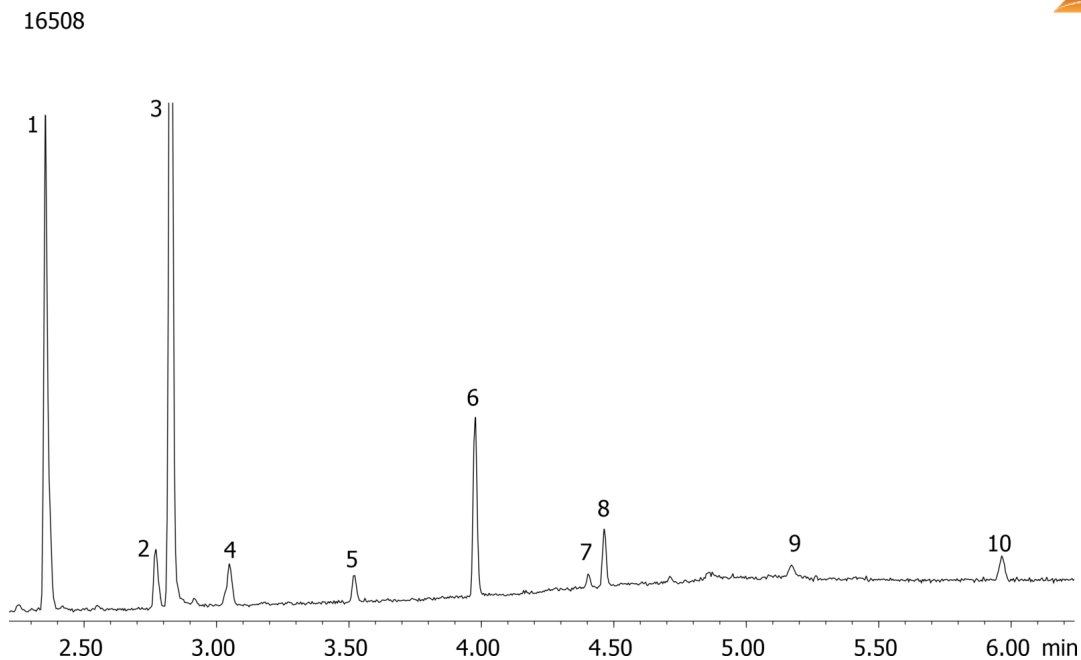


Glycols in Toothpaste Sample on ZB-WAXplus**Column:** Zebron[™] ZB-WAXplus[™], GC Cap. Column 30 m x 0.25 mm x 0.25 μ m, Ea**Phase:** Polyethylene Glycol (PEG)**Dimensions:** 30 meters x 0.25 mm x 0.25 μ m**Order No:** 7HG-G013-11**Oven Profile:** 130 °C to 220 °C @ 20 °C/min for 2 min.**Carrier Gas:** Constant Flow Helium, 1.5 mL/min**Injection:** Split 20:1 0.5 μ L @ 225°C**Detection:** Mass Spectrometer (MS) (250°C)

Analyst Note: 0.10 mg toothpaste in 1.0 mL of 50-50 ACN/Water. Mixed then centrifuged. 100 μ l supernatant diluted to 400 μ l 50-50 ACN/Water. To inject, transfer 250 μ l to an insert in sample vial with 25 μ l 5mg/ml internal standard. Used a 5 m retention gap pre-column.
Glycol standards are in application 16507.
Note - no glycols were found in this toothpaste sample.

**Products used in this application:**

Glycols in Toothpaste Sample on ZB-WAXplus

ANALYTES:

- 1 Levomenthol
- 2 Carvone
- 3 1,3-Propanediol
- 4 Anethole
- 5 Cyclodecane
- 6 3-Phenyl-2-propenal
- 7 Eicosene
- 8 Eugenol
- 9 Glycerin
- 10 o-Methoxycinnamaldehyde

