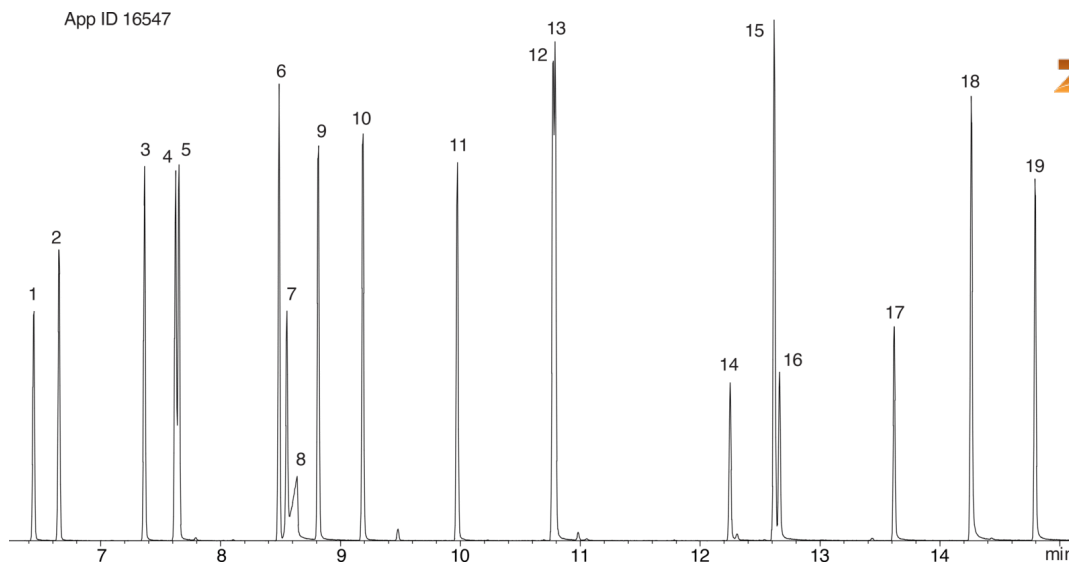


Environmental Phenols on ZB-XLB**Column:** Zebtron[™] ZB-XLB, GC Cap. Column 30 m x 0.25 mm x 0.25 μ m, Ea**Phase:** Proprietary XLB Phase**Dimensions:** 30 meters x 0.25 mm x 0.25 μ m**Order No:** 7HG-G019-11**Oven Profile:** 40 °C for 2 min to 340 °C @ 15 °C/min.**Carrier Gas:** Constant Flow Helium, 1.5 mL/min**Injection:** Split 5:1 1 μ L @ 250°C**Detection:** Mass Selective (MSD) (180°C)**Analyst Note:** 50ppm environmental phenols mix in MeCl₂**Products used in this application:**

Environmental Phenols on ZB-XLB

ANALYTES:

- 1 Phenol
- 2 2-Chlorophenol
- 3 2-Methylphenol
- 4 4-Methylphenol
- 5 3-Methylphenol
- 6 2,4-Dimethylphenol
- 7 2-Nitrophenol
- 8 Benzoic acid
- 9 2,4-Dichlorophenol
- 10 2,6-Dichlorophenol
- 11 4-Chloro-3-methylphenol
- 12 2,4,6-Trichlorophenol
- 13 2,4,5-Trichlorophenol
- 14 4-Nitrophenol
- 15 2,3,4,6-Tetrachlorophenol
- 16 2,4-Dinitrophenol
- 17 2-Methyl-4,6-dinitrophenol
- 18 Pentachlorophenol
- 19 Dinoseb

