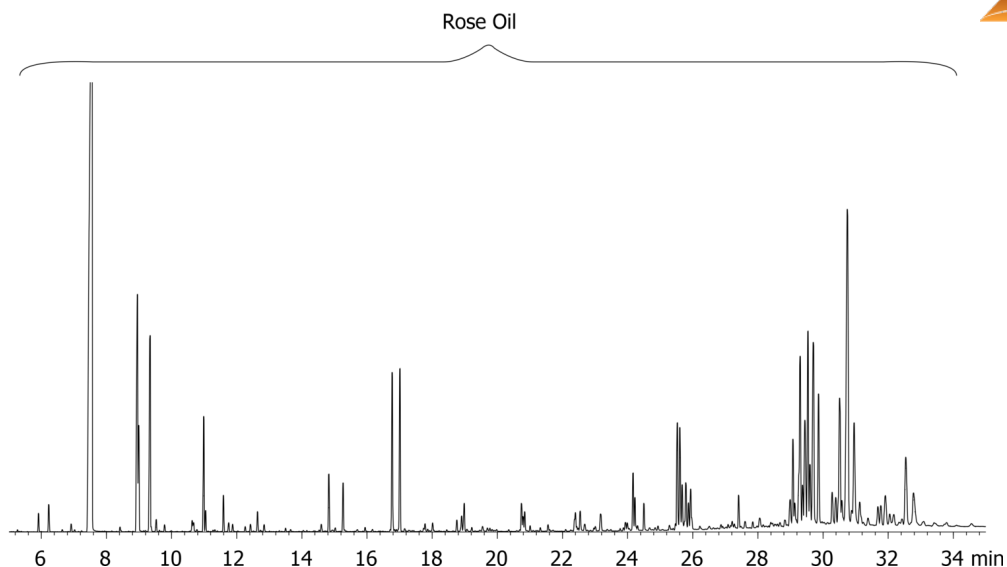


Rose Oil by MSD (Gooseneck liner) on ZB-XLB**Column:** Zebron™ ZB-XLB, GC Cap. Column 30 m x 0.25 mm x 0.25 µm, Ea**Phase:** Proprietary XLB Phase**Dimensions:** 30 meters x 0.25 mm x 0.25 µm**Order No:** 7HG-G019-11**Oven Profile:** 50°C to 340°C @ 10°C/min for 10 min**Carrier Gas:** Constant Flow Helium, 1.2 mL/min**Injection:** Split 25:1 1 µL @ 250°C**Detection:** Mass Selective (MSD) (230°C)**Analyst Note:** Sample is 1% Rose oil in ethyl acetate**Products used in this application:**

16656

**ANALYTES:****1** Rose oil