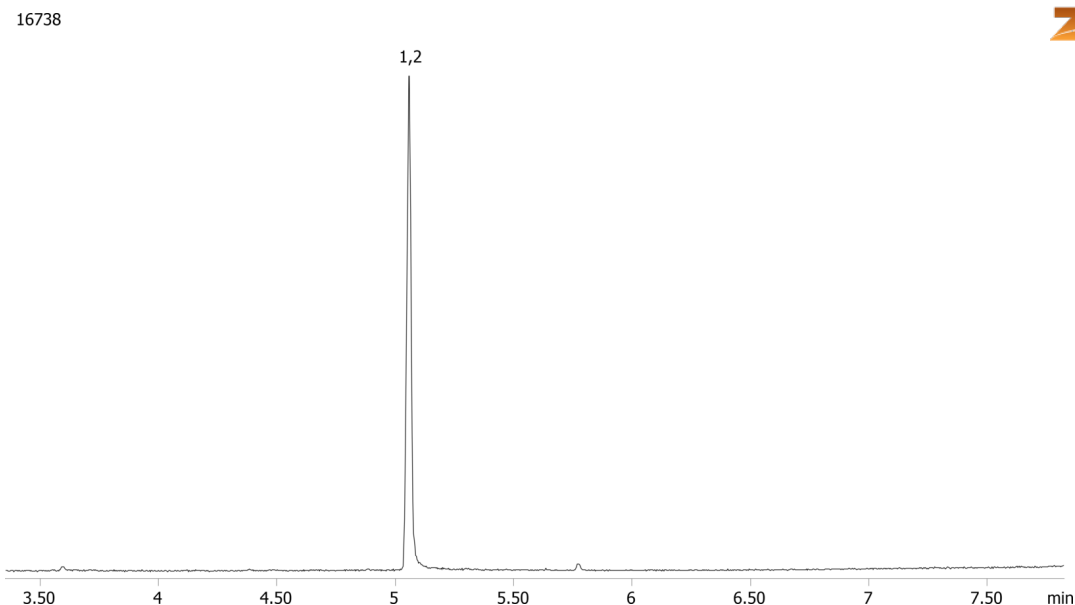


6-MAM by MSD on a ZB-5MS

Column: Zebtron™ ZB-5MS, GC Cap. Column 10 m x 0.18 mm x 0.18 µm, Ea
Phase: 5% Phenyl-Arylene 95% Dimethylpolysiloxane
Dimensions: 10 meters x 0.18 mm x 0.18 µm
Order No: 7CD-G010-08
Oven Profile: 150 °C to 320 °C @ 20 °C/ min

Carrier Gas: Constant Flow He, 1.2 mL/min
Injection: Split 10:1 1 µL @ 250°C
Detection: Mass Selective (MSD) (320°C)
Analyst Note: Analytes are 1ppm derivatized with BSTFA
Sim ions:
(Quant ion*) D3-6-MAM (*402,403): 6-MAM (*399,400,340)

**Products used in this application:****ANALYTES:**

- 1 6-MAM-d3
- 2 6-MAM

