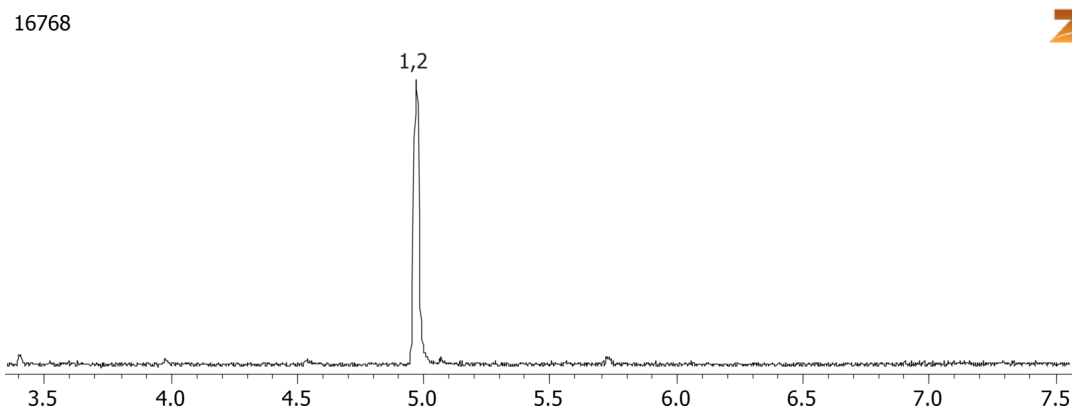


6-MAM by MSD on a ZB-5MS**Column:** Zebtron[™] ZB-5MS, GC Cap. Column 10 m x 0.18 mm x 0.18 µm, Ea**Phase:** 5% Phenyl-Arylene 95% Dimethylpolysiloxane**Dimensions:** 10 meters x 0.18 mm x 0.18 µm**Order No:** 7CD-G010-08**Oven Profile:** 150 °C to 320 °C @ 20 °C/ min**Carrier Gas:** Constant Flow He, 1.2 mL/min**Injection:** Split 10:1 1 µL @ 250°C**Detection:** Mass Selective (MSD) (320°C)**Analyst Note:** Analytes are 1ppm derivatized with BSTFA
Sim ions:
(Quant ion*) D3-6-MAM (*402,403): 6-MAM (*399,400,340)**Products used in this application:****ANALYTES:**

- 1 6-MAM-d3
- 2 6-MAM

