

Reboxetine mesylate on Lux Cellulose-1

Column: Lux® 5 µm Cellulose-1, LC Column 250 x 4.6 mm, Ea

Dimensions: 250 x 4.6 mm ID

Order No: 00G-4459-E0

Elution Type: Isocratic

Eluent A: 0.1 % DEA in CH₃CN

Eluent B: 0.1 % DEA in IPA

Gradient Profile:	Step No.	Time (min)	Pct A	Pct B
	1	10	95	5

Flow Rate: 1 mL/min

Col. Temp.: ambient

Detection: UV-Vis Abs.-Variable Wave.(UV) @ 220 nm (ambient)

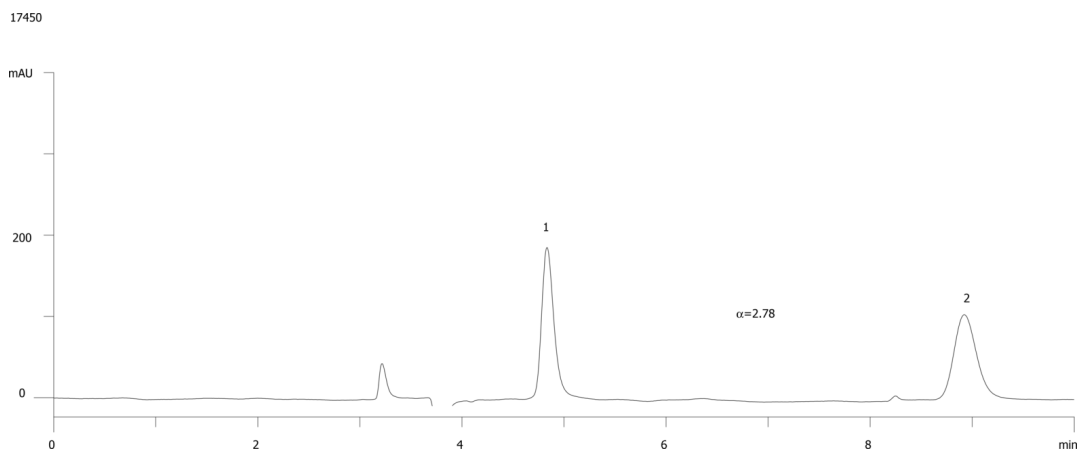
Analyst Note: SecurityGuard™ Guard Cartridge System extends column lifetime.

- SecurityGuard Cartridges, Lux Cellulose-1, 4 x 3.0mm, 10/Pk Part No.: AJ0-8403

- Holder Part No.: KJ0-4282



Products used in this application:



ANALYTES:

1 Reboxetine mesylate

Retention Time: 4.8 min

2 Reboxetine mesylate

Retention Time: 8.9 min

