

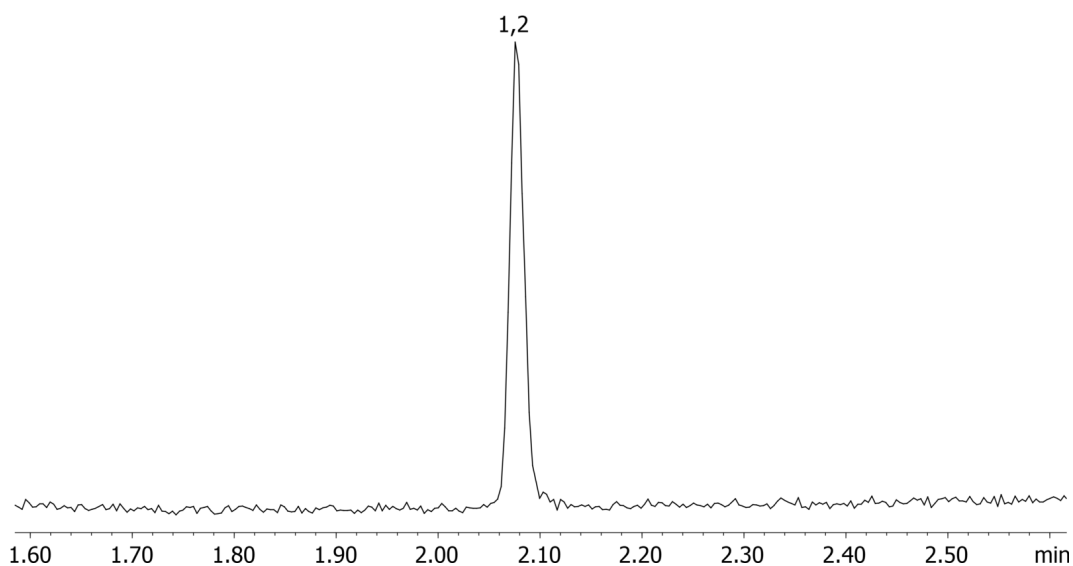
6-MAM by MSD on a ZB-1MS

Column: Zebtron™ ZB-1MS, GC Cap. Column 10 m x 0.18 mm x 0.18 µm, Ea
Phase: 100% Dimethylpolysiloxane
Dimensions: 10 meters x 0.18 mm x 0.18 µm
Order No: 7CD-G011-08
Oven Profile: 225 °C to 340 °C @ 20 °C/min

Carrier Gas: Constant Flow Helium, 55 cm/sec
Injection: Split 10:1 0.1 µL @ 280°C
Detection: Mass Selective (MSD) (320°C)
Analyst Note: Analytes are 1ppm derivatized with BSTFA
Sim ions:
(Quant ion*) D3-6-MAM (*402,403): 6-MAM (*399,400,340)

**Products used in this application:**

17615

**ANALYTES:**

- 1 6-MAM-d3
- 2 6-MAM

