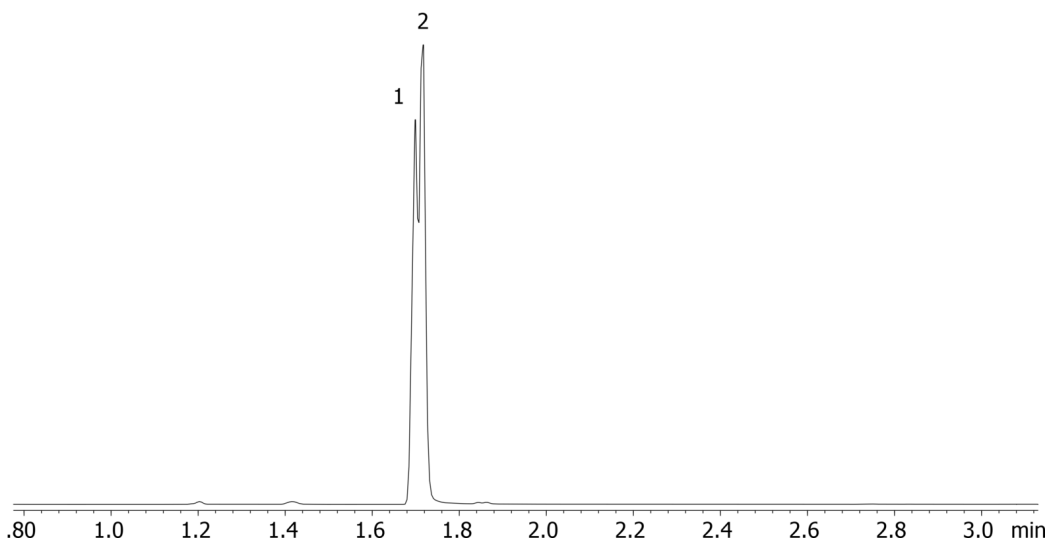


**Methadone by MSD on a ZB-5MSi****Column:** Zebtron<sup>™</sup> ZB-5MSi, GC Cap. Column 10 m x 0.18 mm x 0.18  $\mu$ m, Ea**Phase:** 5% Phenyl 95% Dimethylpolysiloxane**Dimensions:** 10 meters x 0.18 mm x 0.18  $\mu$ m**Order No:** 7CD-G018-08**Oven Profile:** 200 °C to 300 °C @ 20 °C/min**Carrier Gas:** Constant Flow Helium, 0.7 mL/min**Injection:** Split 10:1 1  $\mu$ L @ 280°C**Detection:** Mass Selective (MSD) (320°C)**Analyst Note:** Analytes are 24ppm  
Sim ions:  
(Quant ion\*) D9-Methadone (\*78,303): Methadone (\*72,294,223)**Products used in this application:**

1779

**ANALYTES:**

- 1 Methadone-d9
- 2 Methadone

