

Carboxy-THC by MSD on a ZB-5MSi

Column: Zebtron™ ZB-5MSi, GC Cap. Column 10 m x 0.18 mm x 0.18 µm, Ea
Phase: 5% Phenyl 95% Dimethylpolysiloxane
Dimensions: 10 meters x 0.18 mm x 0.18 µm
Order No: 7CD-G018-08
Oven Profile: 200 °C to 300 °C @ 20 °C/min

Carrier Gas: Constant Flow Helium, 0.7 mL/min

Injection: Split 10:1 1 µL @ 280°C

Detection: Mass Selective (MSD) (320°C)

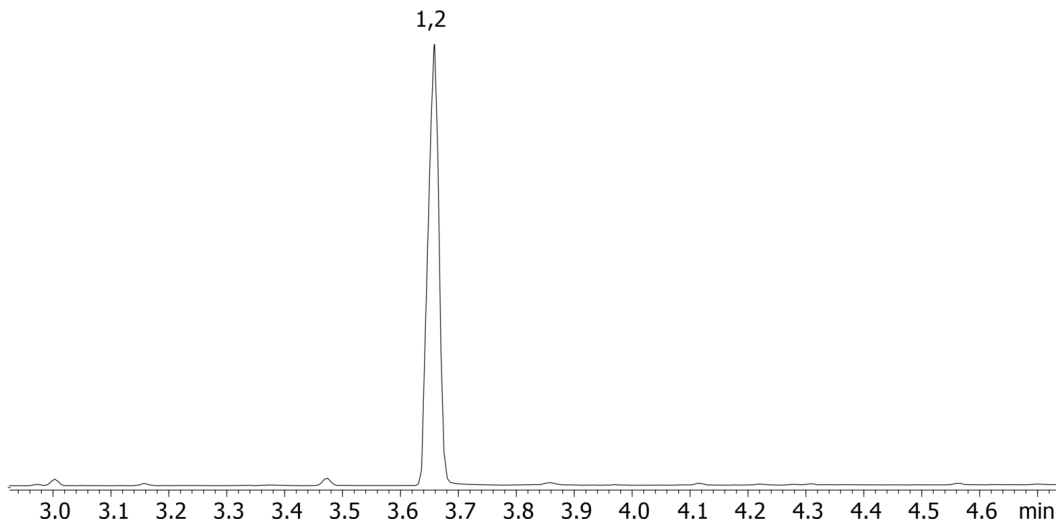
Analyst Note: Analytes are 1.5ppm derivatized with BSTFA
Sim ions:
(Quant ion*) D3-Carboxy-thc (*374,476,477): Carboxy-thc (*371,473,474)



Products used in this application:



17791

**ANALYTES:**

- 1 Carboxy-THC-d3
- 2 Carboxy-THC

