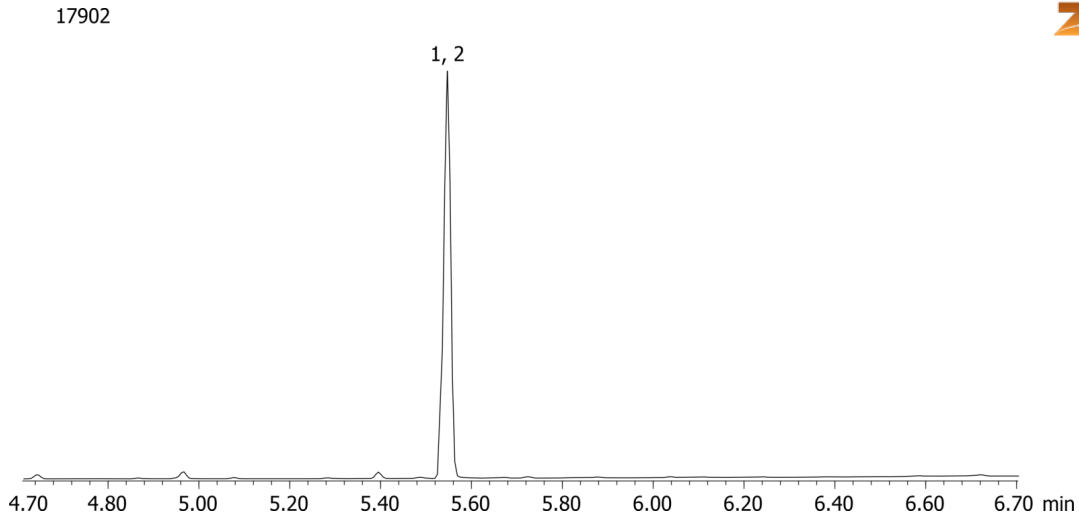


**Carboxy-THC by MSD on ZB-5MSi**

**Column:** Zebtron™ ZB-5MSi, GC Cap. Column 15 m x 0.25 mm x 0.25 µm, Ea  
**Phase:** 5% Phenyl 95% Dimethylpolysiloxane  
**Dimensions:** 15 meters x 0.25 mm x 0.25 µm  
**Order No:** 7EG-G018-11  
**Oven Profile:** 150 °C to 320 °C @ 25 °C/min

**Carrier Gas:** Constant Flow Helium, 1.5 mL/min  
**Injection:** Split 10:1 1 µL @ 260°C  
**Detection:** Mass Selective (MSD) (320°C)  
**Analyst Note:** Analytes are 1.2ppm derivatized with BSTFA  
Sim ions:  
(Quant ion\*) D3-Carboxy-thc (\*374,476,477): Carboxy-thc (\*371,473,474)

**Products used in this application:****ANALYTES:**

- 1 Carboxy-THC-d3
- 2 Carboxy-THC

