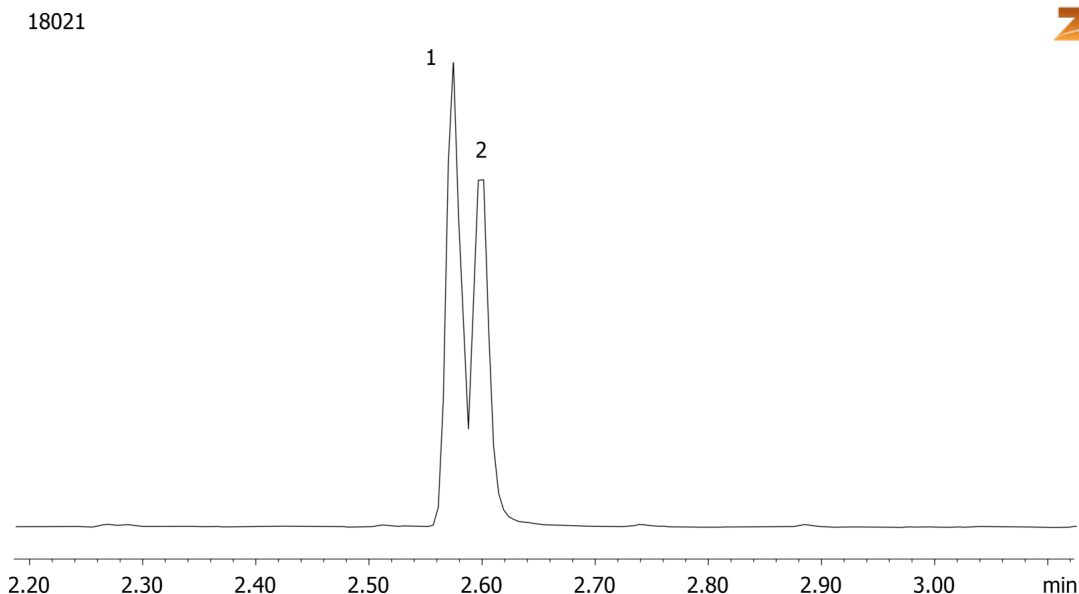


**Methadone from urine by Screen C on a ZB-Drug1****Column:** Zebtron™ ZB-Drug-1, GC Cap. Column 10 m x 0.18 mm x 0.18 µm, Ea**Phase:** Proprietary Drug Phase**Dimensions:** 10 meters x 0.18 mm x 0.18 µm**Order No:** 7CD-G023-08**Oven Profile:** 180 °C to 320 °C @ 25 °C/min for 1 min**Carrier Gas:** Constant Flow Helium, 55 cm/sec**Injection:** Split 20:1 1 µL @ 280°C**Detection:** Mass Selective (MSD) (320°C)**Analyst Note:** Analytes are 300ng/mL in urine  
Sim ions:  
(Quant ion\*) D9-Methadone (\*78,303): Methadone (\*72,294,223)**Products used in this application:****ANALYTES:**

- 1 Methadone-d9
- 2 Methadone

