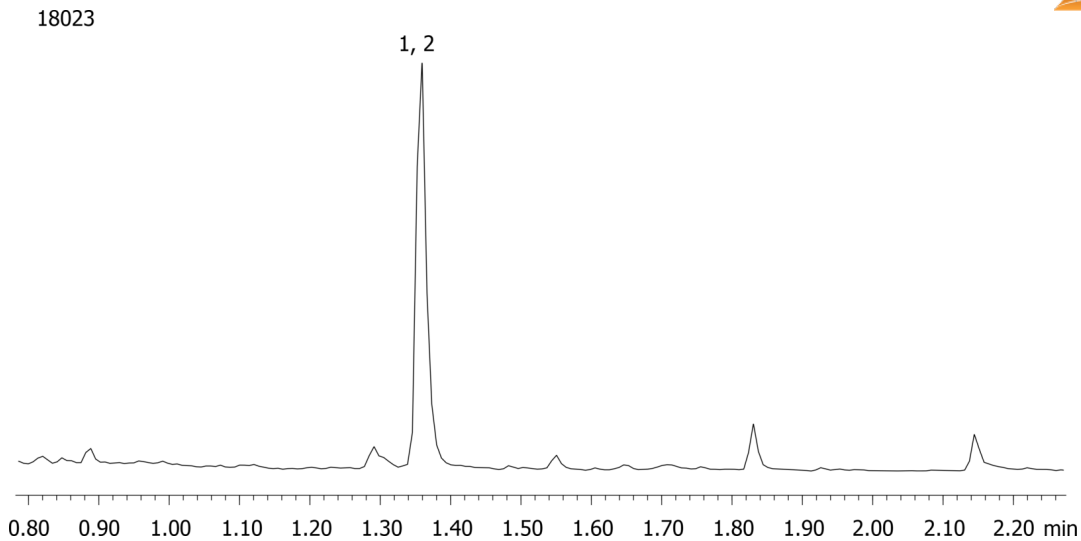


**Benzoylecgonine from urine by Screen C on a ZB-Drug1**

**Column:** Zebtron™ ZB-Drug-1, GC Cap. Column 10 m x 0.18 mm x 0.18 µm, Ea  
**Phase:** Proprietary Drug Phase  
**Dimensions:** 10 meters x 0.18 mm x 0.18 µm  
**Order No:** 7CD-G023-08  
**Oven Profile:** 235 °C to 320 °C @ 25 °C/min for 1min

**Carrier Gas:** Constant Flow Helium, 55 cm/sec  
**Injection:** Split 10:1 1 µL @ 260°C  
**Detection:** Mass Selective (MSD) (320°C)  
**Analyst Note:** Analytes are 300ng/mL in urine derivatized with BSTFA  
Sim ions:  
(Quant ion\*) D3-Benzoylecgonine (\*243,259,364): Benzoylecgonine (\*240,256,361)

**Products used in this application:****ANALYTES:**

- 1 Benzoylecgonine-d3
- 2 Benzoylecgonine

