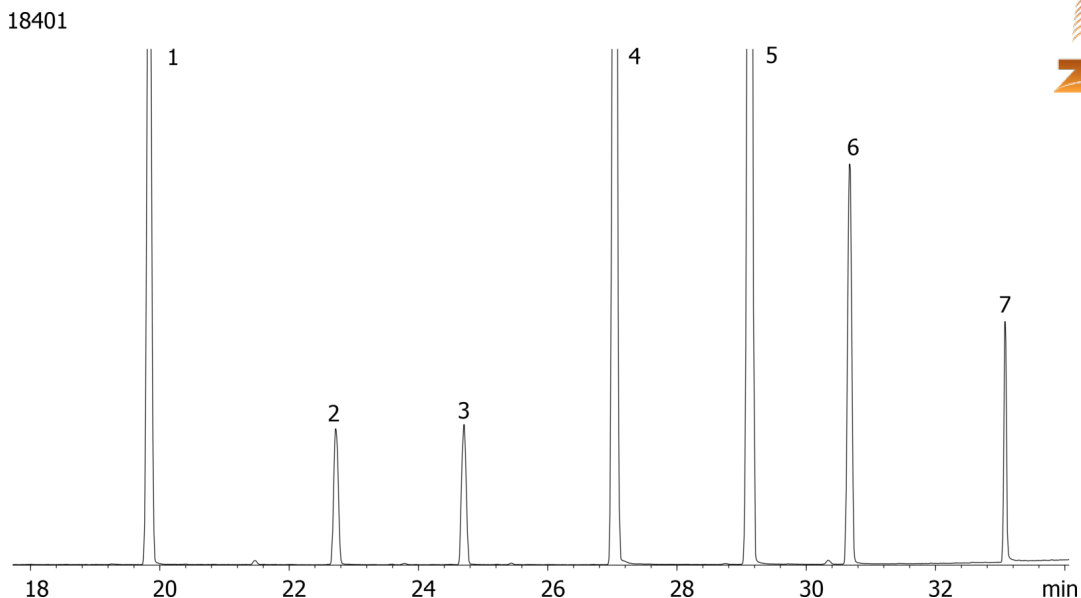


Methylated Chlorinated Acids (EPA 515.2) Mix # 2 on ZB-35

Column: Zebron[™] ZB-35, GC Cap. Column 30 m x 0.25 mm x 0.25 μ m, Ea
Phase: 35% Phenyl 65% Dimethylpolysiloxane
Dimensions: 30 meters x 0.25 mm x 0.25 μ m
Order No: 7HG-G003-11
Oven Profile: 40 °C for 1 min to 100 °C @ 15 °C/min to 225 °C @ 5 °C/min to 320 °C @ 15 °C/min for 5 min
Carrier Gas: Constant Flow Helium, 0.8 mL/min
Injection: On-Column :1 0.5 μ L @ 43°C
Detection: Mass Selective (MSD) (335°C)
Analyst Note: Analytes 10 ppm in Acetone

**Products used in this application:****ANALYTES:**

- 1 Dicamba methyl ester
- 2 2,4-D methyl ester
- 3 Silvex methyl ester
- 4 2,4-DB methyl ester
- 5 Bentazon methyl derivative
- 6 Picloram methyl ester
- 7 Acifluorfen methyl ester

