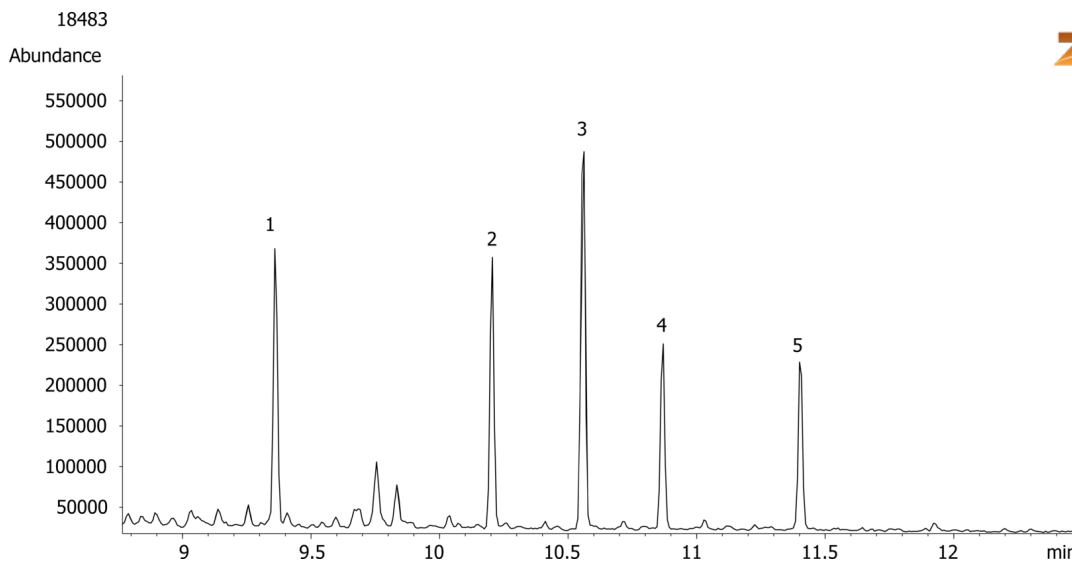


Melamine Screen on ZB-5ms with MSD (scan)

Column: Zebron[™] ZB-5MS, GC Cap. Column 30 m x 0.25 mm x 0.25 µm, Ea
Phase: 5% Phenyl-Arylene 95% Dimethylpolysiloxane
Dimensions: 30 meters x 0.25 mm x 0.25 µm
Order No: 7HG-G010-11
Oven Profile: 75 °C for 1 min to 320 °C @ 15 °C/min for 2.67 min.

Carrier Gas: Constant Flow Helium, 0.9 mL/min
Injection: Splitless :1 1 µL @ 280°C
Detection: Mass Selective (MSD) (320°C)
Analyst Note: High Standard using Scan Mode.
Analytes were derivatized with BSTFA in pyridine.

**Products used in this application:****ANALYTES:**

- 1 Cyanuric acid
- 2 Ammelide
- 3 DACP
- 4 Ammeline
- 5 Melamine

