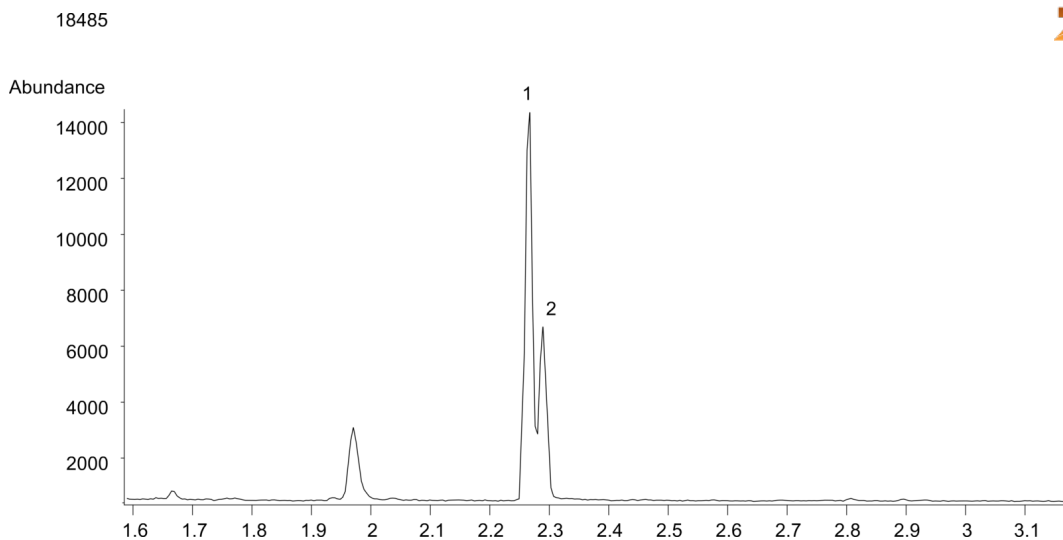


**Methadone from urine by Strata-XC on a ZB-Drug1****Column:** Zebtron<sup>™</sup> ZB-Drug-1, GC Cap. Column 10 m x 0.18 mm x 0.18  $\mu$ m, Ea**Phase:** Proprietary Drug Phase**Dimensions:** 10 meters x 0.18 mm x 0.18  $\mu$ m**Order No:** 7CD-G023-08**Oven Profile:** 180 °C to 340 °C @ 25 °C/min for 3.6 min**Carrier Gas:** Constant Flow Helium, 55 cm/sec**Injection:** Split 10:1 1  $\mu$ L @ 280°C**Detection:** Mass Selective (MSD) (320°C)**Analyst Note:** Methadone/Methadone-d9 is 300/600ng/mL respectively in urine  
Sim ions:  
(Quant ion\*) D9-Methadone (\*78,303): Methadone (\*72,294,223)**Products used in this application:****ANALYTES:**

- 1 Methadone-d9
- 2 Methadone

