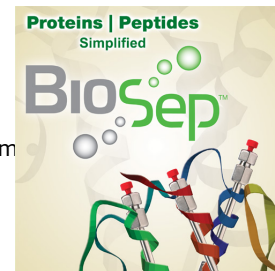


Medium range MW Separation, 50-500 KDa on BioSep2000 (2) and TSK

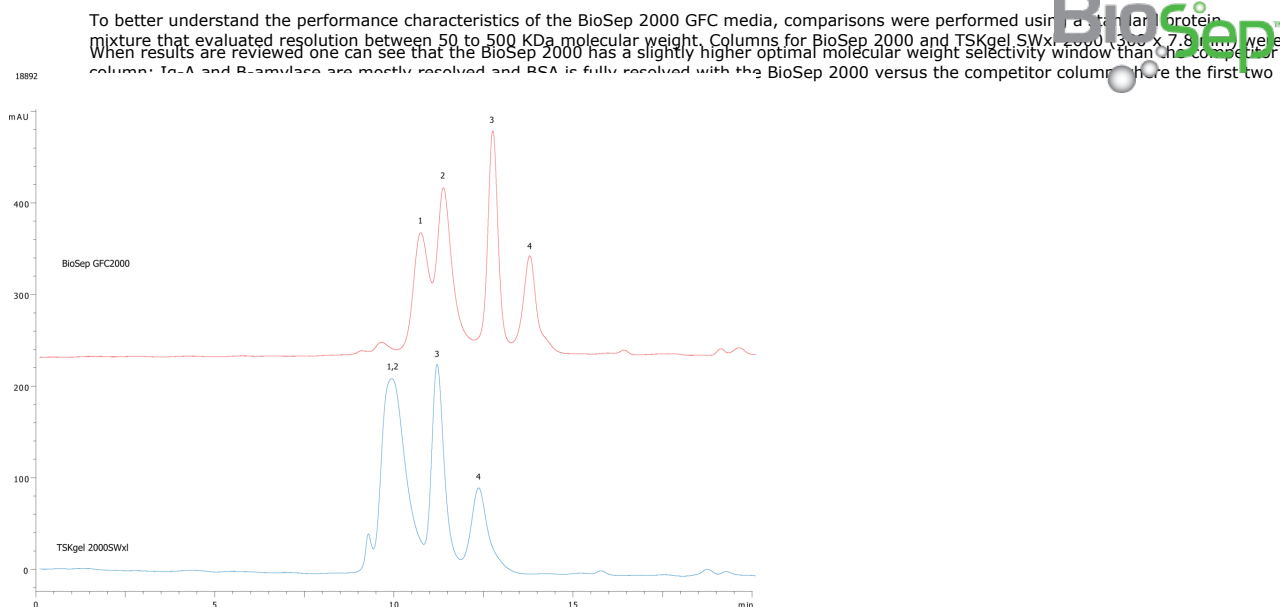
Column: BioSep™ 5 µm SEC-s2000 145 Å, LC Column 300 x 7.8 mm, Ea
Dimensions: 300 x 7.8 mm ID
Order No: 00H-2145-K0
Elution Type: Isocratic
Eluent A: 10mM Tris 150mM NaCl, pH 7.4 □□10mM Tris 150mM NaCl, pH 7.4 □□10mM Tris 150mM NaCl, pH 7.4
Gradient

Step No.	Time (min)	Pct A
1	0	100

Profile:
Flow Rate: 0.6 mL/min
Col. Temp.: ambient
Detection: UV-Vis Abs.-Variable Wave.(UV) @ 214 nm (ambient)
Analyst Note: Application focus: Comparing and contrasting standard protein separations on BioSep 2000 versus competitor columns.



Products used in this application:



ANALYTES:

- 1 Human IgA
- 2 beta-Amylase
- 3 BSA
- 4 Ovalbumin

