

Propranolol on Lux 5 µm Cellulose-1 by Chiral SFC with MeOH dissolution solvent

Column: Lux® 5 µm Cellulose-1, LC Column 250 x 4.6 mm, Ea

Dimensions: 250 x 4.6 mm ID

Order No: 00G-4459-E0

Elution Type: Isocratic

Eluent A: Methanol with 0.1% DEA

Eluent B: Carbon Dioxide

Gradient Profile:	Step No.	Time (min)	Pct A	Pct B
1	0	25	75	

Flow Rate: 2.5 mL/min

Col. Temp.: 35 °C

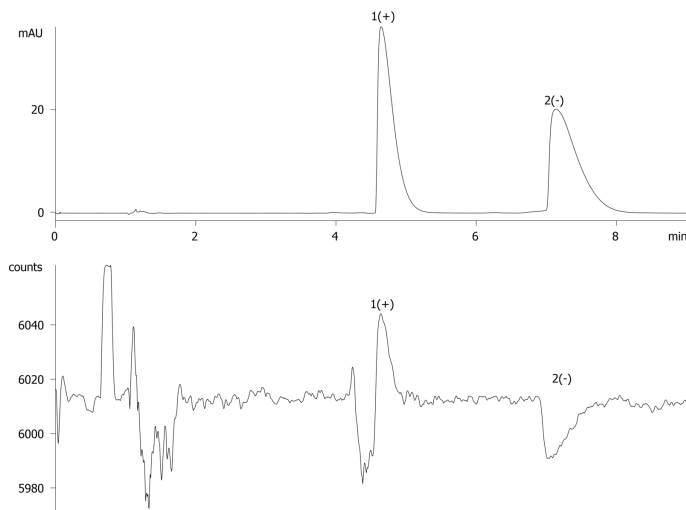
Detection: Laser Polarimeter @ 220 nm (ambient)

Analyst Note: Sample was dissolved in Methanol.

18978



Products used in this application:



ANALYTES:

- 1 Propranolol
- 2 Propranolol

