

HPLC Application

ID No.: 18981

Propranolol on Lux 5 µm Cellulose-1 by Chiral SFC with EtOH dissolution solvent

Column: Lux® 5 µm Cellulose-1, LC Column 250 x 4.6 mm, Ea

Dimensions: 250 x 4.6 mm ID

Order No: 00G-4459-E0

Elution Type: Isocratic

Eluent A: Methanol with 0.1% DEA

Eluent B: Carbon Dioxide

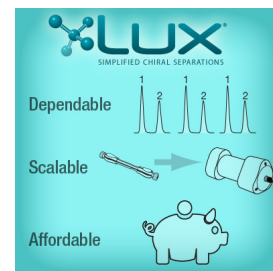
| Gradient | Step No. | Time (min) | Pct A | Pct B |
|----------|----------|------------|-------|-------|
| Profile: | 1 | 0 | 25 | 75 |

Flow Rate: 2.5 mL/min

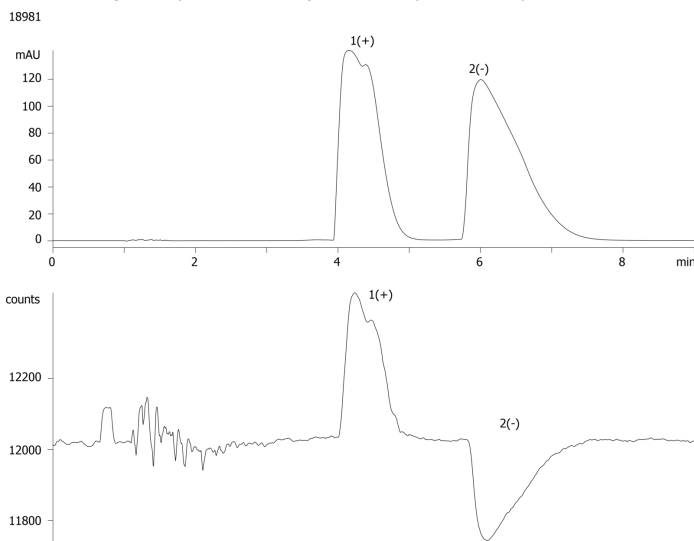
Col. Temp.: 35 °C

Detection: Laser Polarimeter @ 254 nm (ambient)

Analyst Note: Application using combination of UV-Vis detector (upper trace) and PDR-Chiral Advanced Laser Polarimeter (lower trace) courtesy of PLR-Chiral, Inc. 3mg in 100µL on-column injection of Propranolol. Sample was dissolved in Ethanol.



Products used in this application:



ANALYTES:

- 1 Propranolol
- 2 Propranolol

