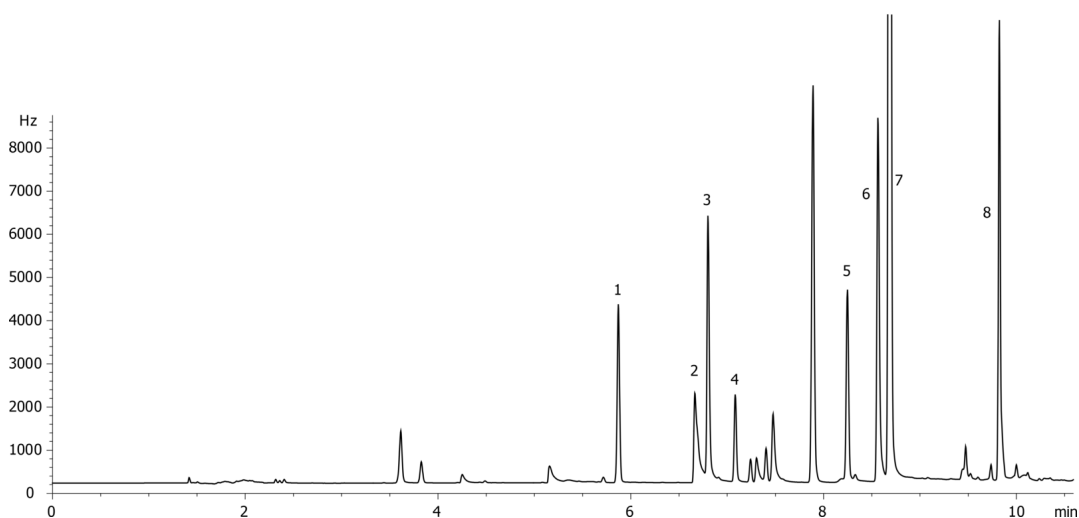


EPA 552.1 by Strata-X-A on a ZB-XLB-HT**Column:** Zebtron™ ZB-XLB-HT, GC Cap. Column 30 m x 0.32 mm x 0.25 µm, Ea**Phase:** Proprietary XLB Phase**Dimensions:** 30 meters x 0.32 mm x 0.25 µm**Order No:** 7HM-G024-11**Oven Profile:** 30°C for 4 min to 50°C @ 30°C/min for 1 min to 70°C @ 15°C/min for 1 min to 115°C @ 20°C/min for 2 min to 200°C @ 30°C/min.**Carrier Gas:** Constant Flow Helium, 2.3 mL/min**Injection:** Pulsed :1 1 µL @ 250°C**Detection:** Electron Capture (ECD) (340°C)**Analyst Note:** Derivatization: Add 1mL of MTBE to the eluent in a screw cap vial or test tube. Heat the sample at 50°C for 1.5 hours. Remove and allow the sample to cool to room temperature. Slowly add 10mL of saturated sodium bicarbonate and invert the sample several times releasing carbon dioxide gas frequently. Aspirate 100µL of the organic layer and transfer to a 2mL vial with insert. Add 10µL of internal standard (1,2,3-Trichloropropane) and**Products used in this application:****ANALYTES:**

- 1 Chloroacetic acid
- 2 Bromoacetic acid
- 3 Dichloroacetic acid
- 4 Dalapon
- 5 Trichloroacetic acid
- 6 Bromochloroacetic acid
- 7 1,2,3-Trichloropropane
- 8 Dibromoacetic acid

