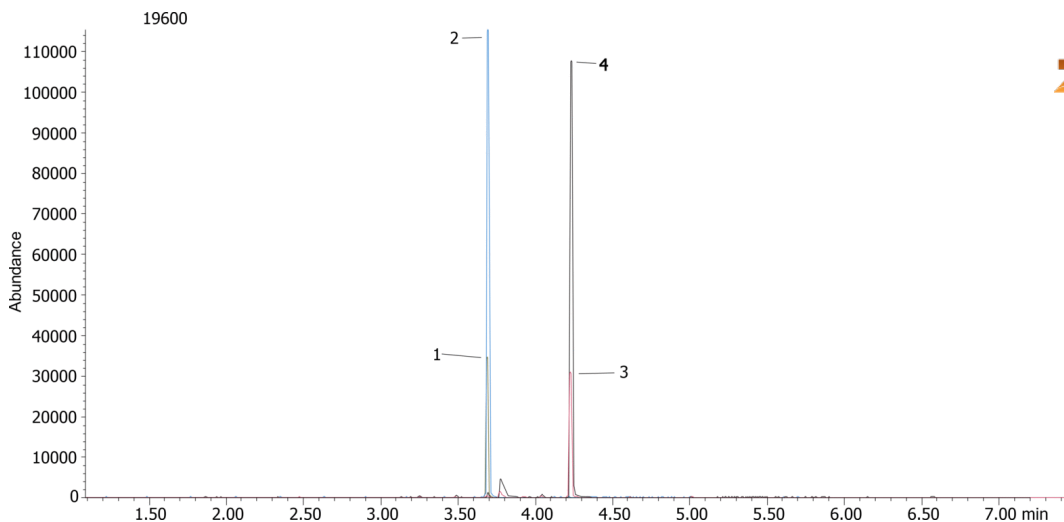


Opiates from urine using Strata-X-Drug B and Zebron Drug-1 10x0.18x0.18**Column:** Zebron™ ZB-Drug-1, GC Cap. Column 10 m x 0.18 mm x 0.18 µm, Ea**Phase:** Proprietary Drug Phase**Dimensions:** 10 meters x 0.18 mm x 0.18 µm**Order No:** 7CD-G023-08**Oven Profile:** 185°C to 320°C @ 30°C/min. Hold 3.00 mins**Carrier Gas:** Constant Flow Helium, 0.7 mL/min**Injection:** Split 20:1 1 µL @ 260°C**Detection:** Mass Selective (MSD) (320°C)**Analyst Note:** Analytes are spiked into urine @ SAMSHA cutoff level of 2000ng/mL**Products used in this application:****ANALYTES:**

- 1 Codeine-d3
- 2 Codeine
- 3 Morphine-d3
- 4 Morphine

