

Aeris Batch Reproducibility #3: SRM 870 on Aeris PEPTIDE 1.7u XB-C18 50x4.6mm

Column: Aeris™ 1.7 µm PEPTIDE XB-C18 100 Å, LC Column 50 x 2.1 mm, Ea

Dimensions: 50 x 2.1 mm ID

Order No: 00B-4506-AN

Elution Type: Isocratic

Eluent A: 20 mM Potassium Phosphate pH 7

Eluent B: Acetonitrile

Gradient

Step No.	Time (min)	Pct A	Pct B
1	0	20	80

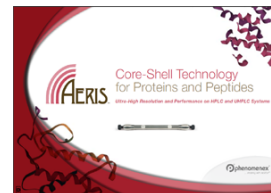
Profile:

Flow Rate: 0.384 mL/min

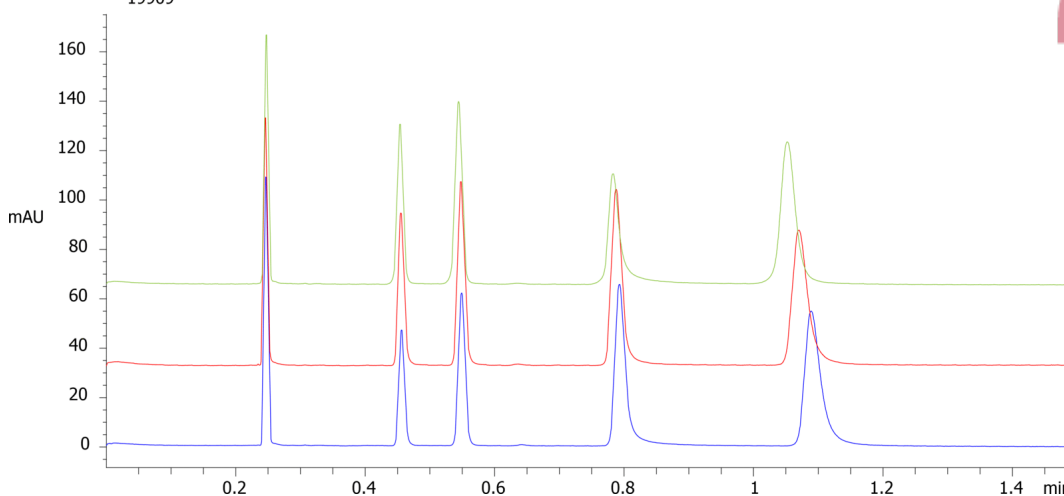
Col. Temp.: 30 °C

Detection: UV-Vis Abs.-Variable Wave.(UV) @ 254 nm (ambient)

Analyst Note: Actual QC testing is done on a 50 x 4.6 mm running at 1.85 mL/min. Column is not an active PN so column was entered as a 50 x 2.1 mm running at 0.384 mL/min for those that would want to replicate the experiment on a commercially available column.



Products used in this application:



ANALYTES:

- 1** Uracil
Retention Time: 0.25 min
- 2** Toluene
Retention Time: 0.45 min
- 3** Ethyl benzene
Retention Time: 0.55 min
- 4** Quinizarin
Retention Time: 0.8 min
- 5** Amitriptyline
Retention Time: 1.1 min

