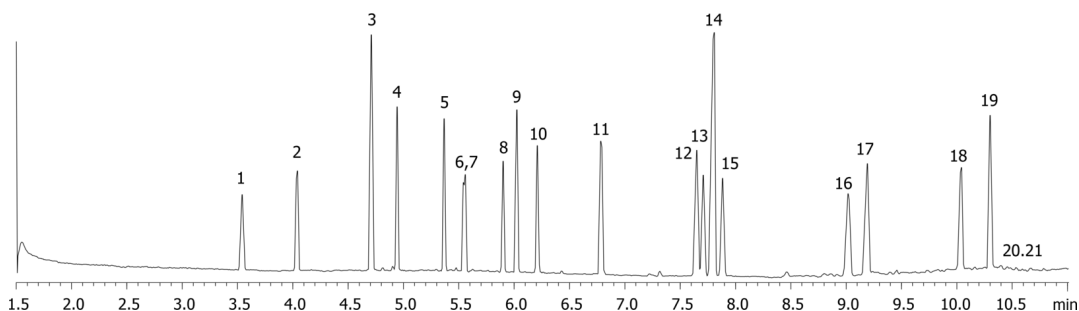


**Phthalates by GCMS on a ZB-50 30x0.25x0.25**

**Column:** Zebron<sup>TM</sup> ZB-50, GC Cap. Column 30 m x 0.25 mm x 0.25  $\mu$ m, Ea  
**Phase:** 50% Phenyl 50% Dimethylpolysiloxane  
**Dimensions:** 30 meters x 0.25 mm x 0.25  $\mu$ m  
**Order No:** 7HG-G004-11  
**Oven Profile:** 135 °C to 275 °C @ 25 °C/min for 3.5 min to 340 °C @ 35 °C/min for 1 min  
**Carrier Gas:** Constant Flow Helium, 1 mL/min  
**Injection:** Split 10:1 1  $\mu$ L @ 260°C  
**Detection:** Mass Selective (MSD) (320°C)  
**Analyst Note:** Analytes are 100 $\mu$ g/mL

19931

**Products used in this application:**

## Phthalates by GCMS on a ZB-50 30x0.25x0.25

### ANALYTES:

- 1 Dimethyl phthalate
- 2 Diethyl phthalate
- 3 Diallyl phthalate
- 4 Dipropyl phthalate
- 5 Dibutyl phthalate
- 6 Diisobutyl phthalate
- 7 Dihexyl phthalate
- 8 bis(2-Methoxyethyl)phthalate
- 9 Dipentyl phthalate
- 10 bis(2-Ethoxyethyl)phthalate
- 11 bis(4-Methyl-2-pentyl)phthalate
- 12 Di(ethylhexyl) phthalate
- 13 Butylbenzyl phthalate
- 14 Diheptyl phthalate
- 15 bis(2-Butoxyethyl)phthalate
- 16 Dicyclohexyl phthalate
- 17 Di-n-octyl phthalate
- 18 Diphenylhexyl phthalate
- 19 Dinonyl phthalate
- 20 Diisononyl phthalate
- 21 Diisodecyl phthalate

