

**THC and Metabolites from Whole Blood on Strata-X-Drug B and Kinetex C18 by LC-MS-MS****Column:** Kinetex® 2.6 µm C18 100 Å, LC Column 50 x 2.1 mm, Ea**Dimensions:** 50 x 2.1 mm ID**Order No:** 00B-4462-AN**Elution Type:** Gradient**Eluent A:** 1 mM ammonium formate with 0.1% FA**Eluent B:** 0.1% FA/methanol:acetonitrile(1:1)

Gradient Profile:	Step No.	Time (min)	Pct A	Pct B
	1	0	50	50
	2	3	5	95
	3	4.5	5	95
	4	4.51	50	50
	5	6	50	50

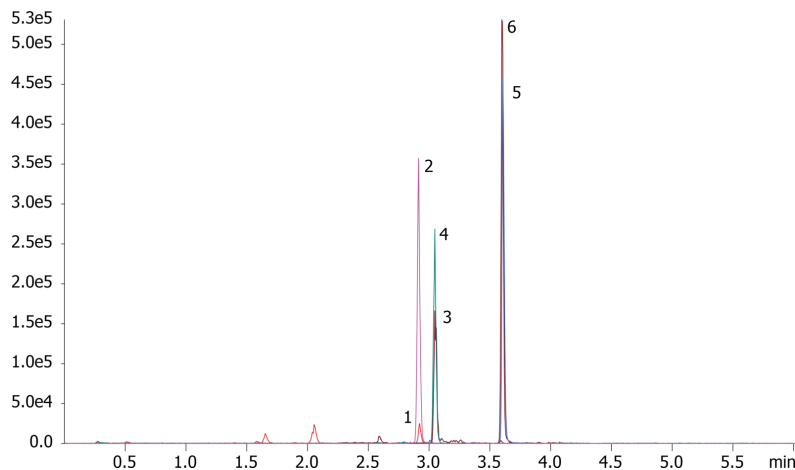
**Flow Rate:** 0.4 mL/min**Col. Temp.:** ambient**Detection:** Mass Spectrometer (MS) @ amu (ambient)**Detector Info:** <a target="\_blank"**Analyst Note:** href="https://sciex.com/products/mass-spectrometers?utm\_campaign=2019%20application%20search&utm\_source=phenomenex&utm\_medium=referral">SCIEX<

Polarity	Analyte	Q1	Q3	DP	CE
(+)	THC-OH (*)	331.0	193.3	55	31
(+)	THC-OH	331.0	201.2	55	33
(+)	THC-OH	331.0	175.3	55	31
(+)	THC-OH-d3	334.0	196.3	55	31
(+)	THC (*)	315.2	193.1	60	31
(+)	THC	315.2	259.1	60	35
(+)	THC-d3	318.2	196.1	60	25
(+)	THC-COOH (*)	345.2	327.0	55	29
(+)	THC-COOH	345.2	299.2	55	49
(+)	THC-COOH-d3	348.0	330.1	55	29

CAD: 7 GS1: 60 GS2: 45 TEM: 600 CUR: 25 IS: 5500

\* indicates quant ion

19947



## THC and Metabolites from Whole Blood on Strata-X-Drug B and Kinetex C18 by LC-MS-MS

### ANALYTES:

- 1 THC-OH
- 2 THC-OH-d3
- 3 THC-COOH
- 4 THC-COOH-d3
- 5 THC
- 6 THC-d3



# Sample Preparation Details

for HPLC Application ID No.: 19947

## THC and Metabolites from Whole Blood on Strata-X-Drug B and Kinetex C18 by LC-MS-MS

### PRODUCT DESCRIPTION:

Strata™-X-Drug B 33 µm Polymeric Strong Cation, 60 mg / 6 mL, Tubes , 30/Pk

Order No.: 8B-S128-UCH

### SOLID PHASE EXTRACTION (SPE) PROCEDURE:

**Note:** The solvent volumes shown below are for a 60 mg bed mass.

The solvent volumes will need to be adjusted for a smaller or larger bed mass.

#### Condition:

#### Load:

Sample Pre-Treatment (before SPE):

Protein precipitation: To 0.5 mL whole blood (spiked with analytes), add 1.0 mL cold ACN:MeOH (85:15 v:v), vortex 1-2 mins (using a maximix II, from Barnstead) with the maximum force possible, followed by centrifugation at 10,000 rpm, for 10 mins. Discard pellet and dilute sample obtained from protein precipitation step with 3 mL of 1% Formic acid in water. Load sample directly onto cartridge - NO CONDITIONING REQUIRED

#### Wash:

#### Dry:

5 mins at 7-15 psi Nitrogen

#### Elute:

### Final Prep and Analysis:

Evaporate eluant to dryness under 50 °C nitrogen. Reconstitute in 500uL of initial mobile phase.

Extraction was automated and performed using a Gilson GX-274 ASPEC system

Inject: 5 µL on HPLC Mass Spectrometer (MS) @ amu (ambient)

ANALYTES:	Spiked Conc. (ng/mL)	Log P	pKa	% Rec	%RSC (n=0)
1 THC-OH	100			100.3	
2 THC-OH-d3	100			100	
3 THC-COOH	100			103.9	
4 THC-COOH-d3	100			100	
5 THC	100			99.3	
6 THC-d3	100			100	

**Note:** This method is designed as a convenient starting point for further investigation and can be tailored to meet your extraction goals. Call your local Phenomenex Representative for assistance in method development and optimization techniques.

©2025 Phenomenex Inc. All rights reserved.

For more information contact your Phenomenex Representative at [info@phenomenex.com](mailto:info@phenomenex.com)



Phenomenex products are available worldwide.

[www.phenomenex.com.cn](http://www.phenomenex.com.cn)

[info@phenomenex.com](mailto:info@phenomenex.com)