

## Aldosterone on Kinetex 2.6 µm XB-C18 50x3 mm ID

**Column:** Kinetex® 2.6 µm XB-C18 100 Å, LC Column 50 x 3 mm, Ea

**Dimensions:** 50 x 3 mm ID

**Order No:** 00B-4496-Y0

**Elution Type:** Gradient

**Eluent A:** DI Water

**Eluent B:** Methanol/Acetonitrile (50:50)

Gradient Profile:	Step No.	Time (min)	Pct A	Pct B
	1	0	70	30
	2	4	10	90
	3	5	10	90
	4	5.1	70	30
	5	7	70	30

**Flow Rate:** 500 µL/min

**Col. Temp.:** ambient

**Detection:** Tandem Mass Spec (MS-MS) @ (ambient)

**Detector Info:** <a target="\_blank"

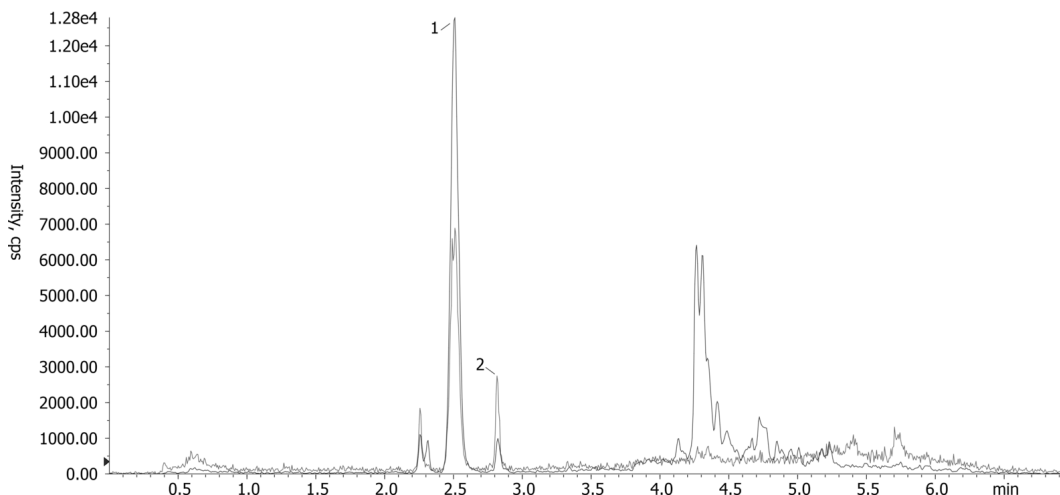
**Analyst Note:** href="https://sciex.com/products/mass-spectrometers?utm\_campaign=2019%20application%20search&utm\_source=phenomenex&utm\_medium=referral">SCIEX<

SecurityGuard™ ULTRA Guard Cartridge System extends column lifetime.

- SecurityGuard ULTRA Cartridges, UHPLC C18 for 3.0mm ID Columns, 3/Pk Part No.: AJ0-8775

- Holder Part No.: AJ0-9000

20009



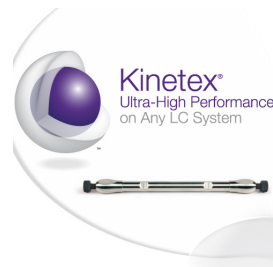
### ANALYTES:

#### 1 Aldosterone

Retention Time: 2.52 min

#### 2 Cortisone

Retention Time: 2.84 min



Products used in this application:



# Sample Preparation Details

for HPLC Application ID No.: 20009

## Aldosterone on Kinetex 2.6 µm XB-C18 50x3 mm ID

### PRODUCT DESCRIPTION:

Strata™-X-A 33 µm Polymeric Strong Anion, 60 mg / 3 mL, Tubes , 50/Pk

Order No.: 8B-S123-UBJ

### SOLID PHASE EXTRACTION (SPE) PROCEDURE:

**Note:** The solvent volumes shown below are for a 60 mg bed mass.

The solvent volumes will need to be adjusted for a smaller or larger bed mass.

#### Condition:

---

#### Load:

---

Into individually labeled test tubes, combine 0.5 mL serum (or calibrator or other QC sample), 1 mL 25 mM Ammonium bicarbonate (pH 8.9-9.0), and 0.1 mL working internal standard.

#### Wash:

---

#### Dry:

---

5 min at high vacuum

#### Elute:

---

#### Final Prep and Analysis:

---

Inject: 30 µL on HPLC Tandem Mass Spec (MS-MS) @ (ambient)

ANALYTES:	Spiked Conc. (ng/mL)	Log P	pKa	% Rec	%RSC (n=0)
1 Aldosterone	0				
2 Cortisone	0				

**Note:** This method is designed as a convenient starting point for further investigation and can be tailored to meet your extraction goals.  
Call your local Phenomenex Representative for assistance in method development and optimization techniques.

©2025 Phenomenex Inc. All rights reserved.

For more information contact your Phenomenex Representative at [info@phenomenex.com](mailto:info@phenomenex.com)



Phenomenex products are available worldwide.

[www.phenomenex.com.cn](http://www.phenomenex.com.cn)

[info@phenomenex.com](mailto:info@phenomenex.com)