

## Chloramphenicol in Seafood and dairy products by LC/MS/MS

**Column:** Kinetex® 2.6 µm C18 100 Å, LC Column 50 x 2.1 mm, Ea

**Dimensions:** 50 x 2.1 mm ID

**Order No:** 00B-4462-AN

**Elution Type:** Gradient

**Eluent A:** Water

**Eluent B:** Acetonitrile

Gradient Profile:	Step No.	Time (min)	Pct A	Pct B
	1	-2	95	5
	2	0	95	5
	3	2	95	5
	4	2.01	5	95
	5	4.5	5	95

**Flow Rate:** 0.4 mL/min

**Col. Temp.:** 20 °C

**Detection:** Tandem Mass Spec (MS-MS) @ (450 °C)

**Detector Info:** <a target="\_blank"

**Analyst Note:**

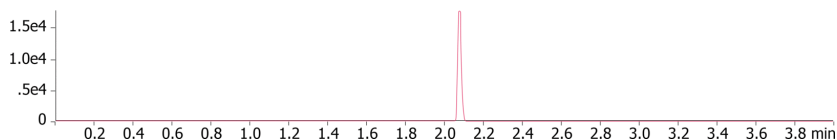
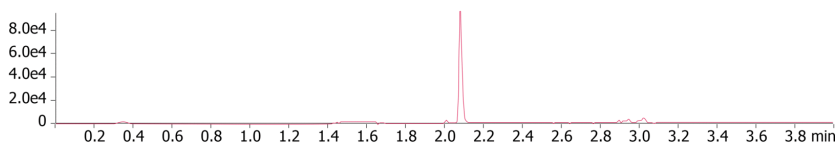
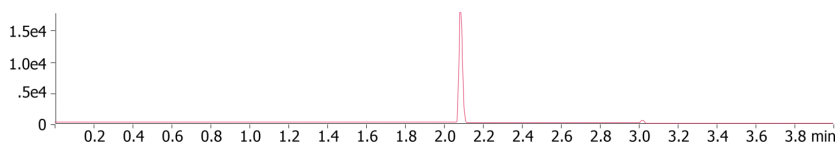
href="https://sciex.com/products/mass-spectrometers?utm\_campaign=2019%20application%20search&utm\_source=phenomenex&utm\_medium=referral">SCIEX<

SecurityGuard™ ULTRA Guard Cartridge System extends column lifetime.

- SecurityGuard ULTRA Cartridges, UHPLC C18 for 2.1mm ID Columns, 3/Pk Part No.: AJ0-8782

- Holder Part No.: AJ0-9000

20026



### ANALYTES:

- 1 Chloramphenicol  
Retention Time: 2.09 min
- 2 Chloramphenicol  
Retention Time: 2.09 min
- 3 Chloramphenicol-d5  
Retention Time: 2.08 min



Products used in this application:



# Sample Preparation Details

for HPLC Application ID No.: 20026

## Chloramphenicol in Seafood and dairy products by LC/MS/MS

### PRODUCT DESCRIPTION:

Strata<sup>TM</sup>-X 33  $\mu$ m Polymeric Reversed Phase, 60 mg / 3 mL, Tubes , 50/Pk

Order No.: 8B-S100-UBJ

### SOLID PHASE EXTRACTION (SPE) PROCEDURE:

**Note:** The solvent volumes shown below are for a 60 mg bed mass.

The solvent volumes will need to be adjusted for a smaller or larger bed mass.

#### Condition:

---

#### Load:

---

Homogenize ~100 g of thawed shrimp using blender or tissue homogenizer. Weigh out 5 g of homogenized shrimp and transfer to a 15 mL polypropylene tube. Add 50  $\mu$ L of d5-Chloramphenicol (IS) solution. Mix thoroughly using a vortex mixer to ensure

#### Wash:

---

#### Dry:

---

5 minutes @ 10 in Hg Vacuum

#### Elute:

---

#### Final Prep and Analysis:

---

Inject: 25  $\mu$ L on HPLC Tandem Mass Spec (MS-MS) @ (450°C)

ANALYTES:		Spiked Conc.	Log P	pKa	% Rec	%RSC
		(ng/mL)				(n=0)
1	Chloramphenicol	0				
2	Chloramphenicol	0				
3	Chloramphenicol-d5	0				

**Note:** This method is designed as a convenient starting point for further investigation and can be tailored to meet your extraction goals. Call your local Phenomenex Representative for assistance in method development and optimization techniques.

©2025 Phenomenex Inc. All rights reserved.

For more information contact your Phenomenex Representative at [info@phenomenex.com](mailto:info@phenomenex.com)



Phenomenex products are available worldwide.

[www.phenomenex.com.cn](http://www.phenomenex.com.cn)

[info@phenomenex.com](mailto:info@phenomenex.com)