

HPLC Application

ID No.: 20098

Suprofen on Lux 5 μ m Cellulose-3 in NP

Column: Lux[®] 5 μ m Cellulose-3, LC Column 250 x 4.6 mm, Ea

Dimensions: 250 x 4.6 mm ID

Order No: 00G-4493-E0

Elution Type: Isocratic

Eluent A: Hexane / EtOH (60:40) Formic acid (0.1%)

| Gradient | Step No. | Time (min) | Pct A |
|-----------------|----------|------------|-------|
| Profile: | 1 | 0 | 100 |

Flow Rate: 1 mL/min

Col. Temp.: ambient

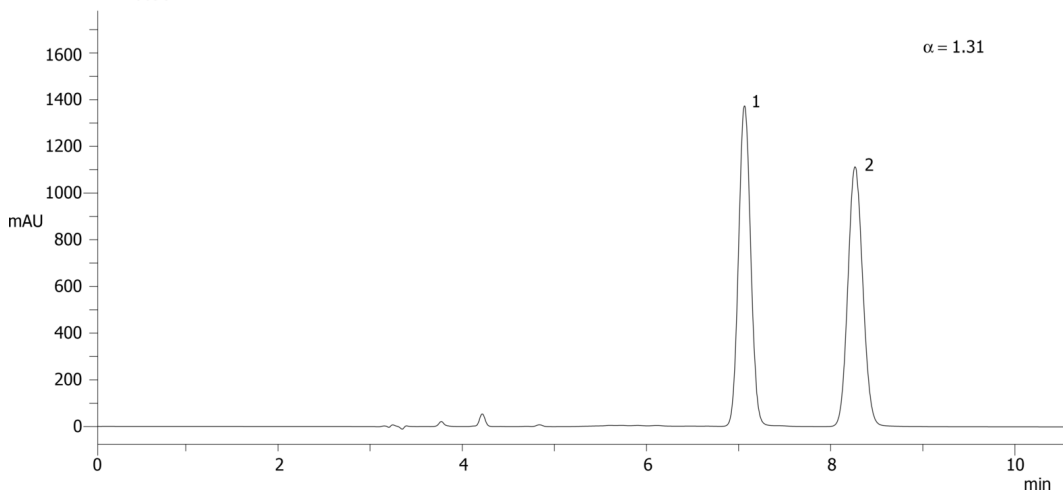
Detection: UV-Vis Abs.-Variable Wave.(UV) @ 220 nm (ambient)

Analyst Note: SecurityGuard[™] Guard Cartridge System extends column lifetime.

- SecurityGuard Cartridges, Lux Cellulose-3 4 x 3.0 mm, 10/Pk Part No.: AJ0-8622

- Holder Part No.: KJ0-4282

20098



ANALYTES:

1 Suprofen

Retention Time: 7.06 min

2 Suprofen

Retention Time: 8.26 min



Products used in this application:

