

## Yarra 3µm SEC-2000: Ig-G Anti IGF-1 Mouse Ab

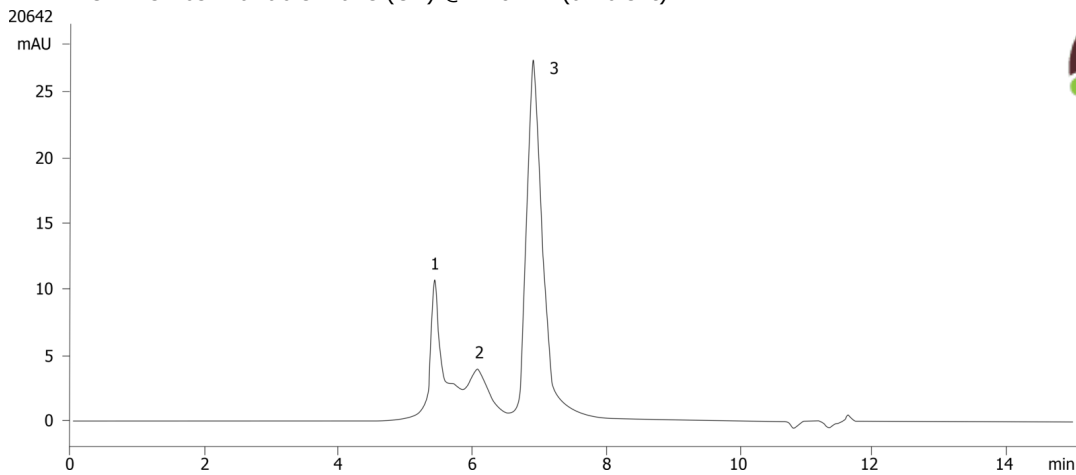
**Column:** Yarra™ 3 µm SEC-2000, LC Column 300 x 7.8 mm, Ea  
**Dimensions:** 300 x 7.8 mm ID  
**Order No:** 00H-4512-K0  
**Elution Type:** Isocratic  
**Eluent A:** 50 mM Sodium Phosphate pH 6.8 / 0.3 M Sodium Chloride  
**Gradient**

Step No.	Time (min)	Pct A
1	0	100

**Flow Rate:** 1 mL/min  
**Col. Temp.:** ambient  
**Detection:** UV-Vis Abs.-Variable Wave.(UV) @ 220 nm (ambient)



Products used in this application:



### ANALYTES:

- 1** High MW aggregate  
Retention Time: 5.4 min
- 2** Mouse IgG dimer (anti IgF-1)  
Retention Time: 6.4 min
- 3** Mouse IgG (Anti IgF-1)  
Retention Time: 6.9 min