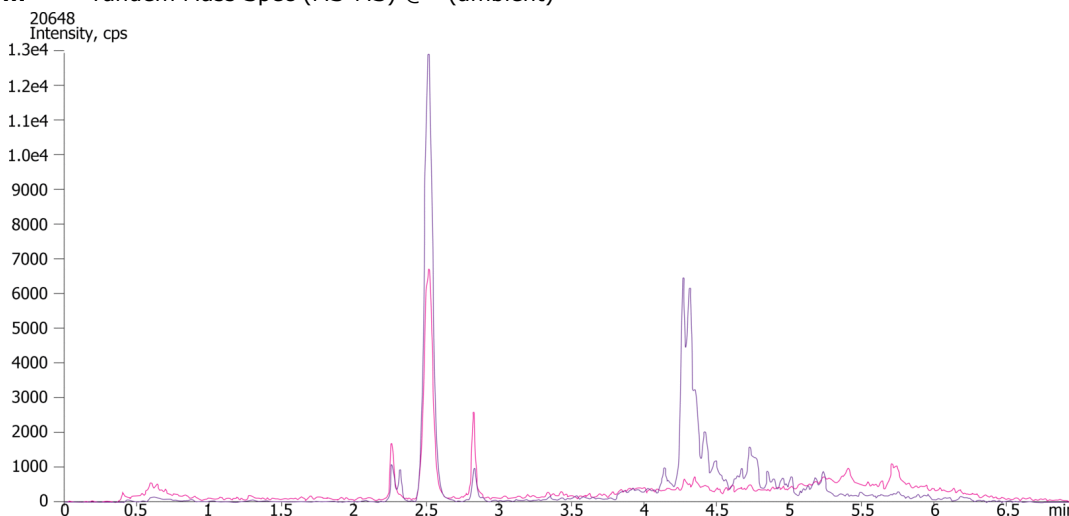


**Aldosterone analysis by LCMS using Kinetex 2.6um XB-C18 50x3.0mm****Column:** Kinetex® 2.6 µm XB-C18 100 Å, LC Column 50 x 3 mm, Ea**Dimensions:** 50 x 3 mm ID**Order No:** 00B-4496-Y0**Elution Type:** Gradient**Eluent A:** Water**Eluent B:** 50/50 AcCN/Methanol

Gradient Profile:	Step No.	Time (min)	Pct A	Pct B
	1	0	70	30
	2	4	10	90
	3	5	10	90
	4	5.1	70	30
	5	7	70	30

**Flow Rate:** 0.5 mL/min**Col. Temp.:** ambient**Detection:** Tandem Mass Spec (MS-MS) @ (ambient)**Products used in this application:****ANALYTES:****1** Aldosterone

Retention Time: 2.51 min



# Sample Preparation Details

for HPLC Application ID No.: 20648

## Aldosterone analysis by LCMS using Kinetex 2.6um XB-C18 50x3.0mm

### PRODUCT DESCRIPTION:

Strata™-X-A 33 µm Polymeric Strong Anion, 60 mg / 3 mL, Tubes , 50/Pk

Order No.: 8B-S123-UBJ

### SOLID PHASE EXTRACTION (SPE) PROCEDURE:

**Note:** The solvent volumes shown below are for a 60 mg bed mass.

The solvent volumes will need to be adjusted for a smaller or larger bed mass.

#### Condition:

#### Load:

#### Wash:

#### Dry:

5 min at high vacuum

#### Elute:

#### Final Prep and Analysis:

Inject: 30 µL on HPLC Tandem Mass Spec (MS-MS) @ (ambient)

ANALYTES:	Spiked Conc. (ng/mL)	Log P	pKa	% Rec	%RSC (n=0)
1 Aldosterone	0				

**Note:** This method is designed as a convenient starting point for further investigation and can be tailored to meet your extraction goals.  
Call your local Phenomenex Representative for assistance in method development and optimization techniques.

©2025 Phenomenex Inc. All rights reserved.

For more information contact your Phenomenex Representative at [info@phenomenex.com](mailto:info@phenomenex.com)



Phenomenex products are available worldwide.

[www.phenomenex.com.cn](http://www.phenomenex.com.cn)

[info@phenomenex.com](mailto:info@phenomenex.com)