

## Histamine by LCMS using Luna 3um HILIC 100x2.1mm

**Column:** Luna® 3 µm HILIC 200 Å, LC Column 100 x 2 mm, Ea

**Dimensions:** 100 x 2 mm ID

**Order No:** 00D-4449-B0

**Elution Type:** Gradient

**Eluent A:** 50:45:5 ACN:DI H2O: 100 mM Amm. Form, pH 3.22

**Eluent B:** 95:5 ACN:100 mM Amm. Formate, pH 3.22

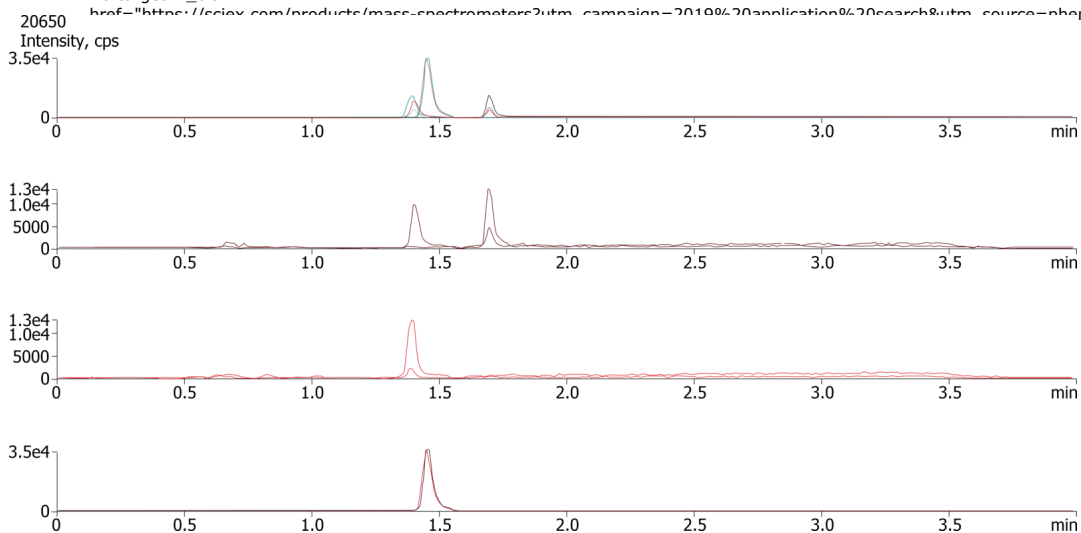
Gradient Profile:	Step No.	Time (min)	Pct A	Pct B
	1	0	17	83
	2	1.5	100	0
	3	2.5	100	0
	4	2.6	17	83
	5	4.5	17	83

**Flow Rate:** 0.6 mL/min

**Col. Temp.:** ambient

**Detection:** Tandem Mass Spec (MS-MS) @ (ambient)

**Detector Info:** <a target="\_blank"



### ANALYTES:

**1** 1-Methyl histamine

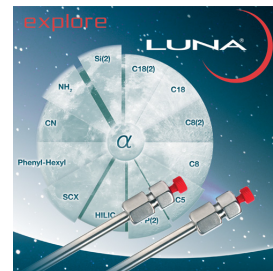
Retention Time: 1.39 min

**2** N-Methyl histamine

Retention Time: 1.45 min

**3** Histamine

Retention Time: 1.69 min



Products used in this application:



# Sample Preparation Details

for HPLC Application ID No.: 20650

## Histamine by LCMS using Luna 3um HILIC 100x2.1mm

### PRODUCT DESCRIPTION:

Strata™-X-CW 33 µm Polymeric Weak Cation, 30 mg / 3 mL, Tubes , 50/Pk

Order No.: 8B-S035-TBJ

### SOLID PHASE EXTRACTION (SPE) PROCEDURE:

**Note:** The solvent volumes shown below are for a 30 mg bed mass.

The solvent volumes will need to be adjusted for a smaller or larger bed mass.

#### Condition:

#### Load:

#### Wash:

#### Dry:

2 min at high vacuum level, ~20-30 in Hg

#### Elute:

#### Final Prep and Analysis:

Inject: 2 µL on HPLC Tandem Mass Spec (MS-MS) @ (ambient)

ANALYTES:	Spiked Conc. (ng/mL)	Log P	pKa	% Rec	%RSC (n=0)
1 1-Methyl histamine	0				
2 N-Methyl histamine	0				
3 Histamine	0				

**Note:** This method is designed as a convenient starting point for further investigation and can be tailored to meet your extraction goals.  
Call your local Phenomenex Representative for assistance in method development and optimization techniques.

©2025 Phenomenex Inc. All rights reserved.

For more information contact your Phenomenex Representative at [info@phenomenex.com](mailto:info@phenomenex.com)



Phenomenex products are available worldwide.

[www.phenomenex.com.cn](http://www.phenomenex.com.cn)

[info@phenomenex.com](mailto:info@phenomenex.com)