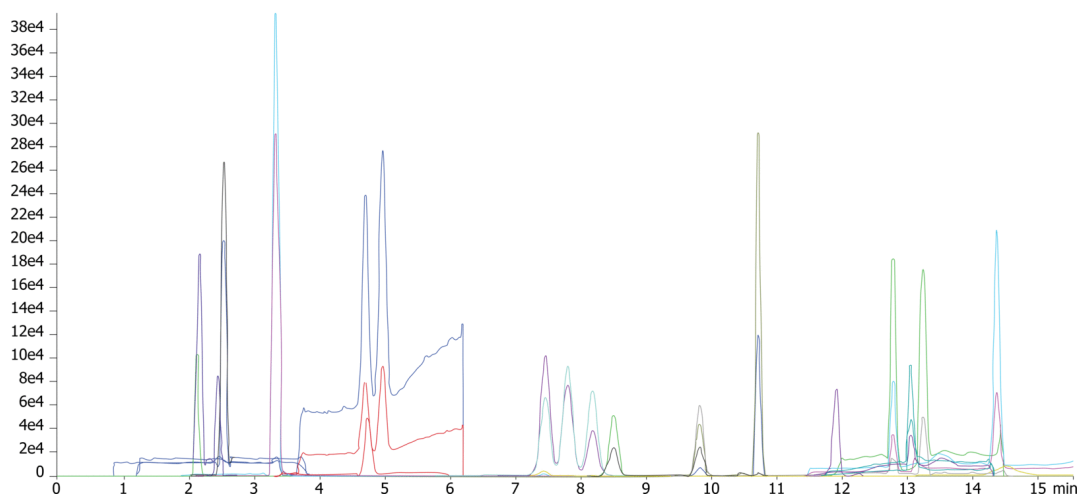


Phthalates in Food and Beverage by LC/MS/MS**Column:** Kinetex® 5µm C18 100 Å, LC Column 100 x 4.6 mm, Ea**Dimensions:** 100 x 4.6 mm ID**Order No:** 00D-4601-E0**Elution Type:** Isocratic**Eluent A:** Water with 10 mM Ammonium Acetate**Eluent B:** Methanol

Gradient	Step No.	Time (min)	Pct A	Pct B
Profile:	1	0	100	0

Flow Rate: 500 µL/min**Col. Temp.:** ambient**Detection:** Tandem Mass Spec (MS-MS) @ (ambient)**Detector Info:** SCIEX<

20887

**Products used in this application:**

Phthalates in Food and Beverage by LC/MS/MS

ANALYTES:

- 1** Dimethyl phthalate
- 2** Diethyl phthalate
- 3** Diallyl phthalate
- 4** Dipropyl phthalate
- 5** Diisopropyl phthalate
- 6** Dibutyl phthalate
- 7** Diisobutyl phthalate
- 8** bis(2-Methoxyethyl)phthalate
- 9** Dipentyl phthalate
- 10** Diisopentyl phthalate
- 11** bis(2-Ethoxyethyl)phthalate
- 12** Benzyl butyl phthalate
- 13** Diphenyl phthalate
- 14** Dicyclohexyl phthalate
- 15** bis(4-methyl-2-pentyl)phthalate
- 16** Dihexyl phthalate
- 17** Di-n-heptyl phthalate
- 18** bis(2-n-Butoxyethyl)phthalate
- 19** bis(2-Ethylhexyl)phthalate
- 20** Di-n-octyl phthalate
- 21** Diisononyl ortho-phthalate
- 22** Diisodecyl ortho

