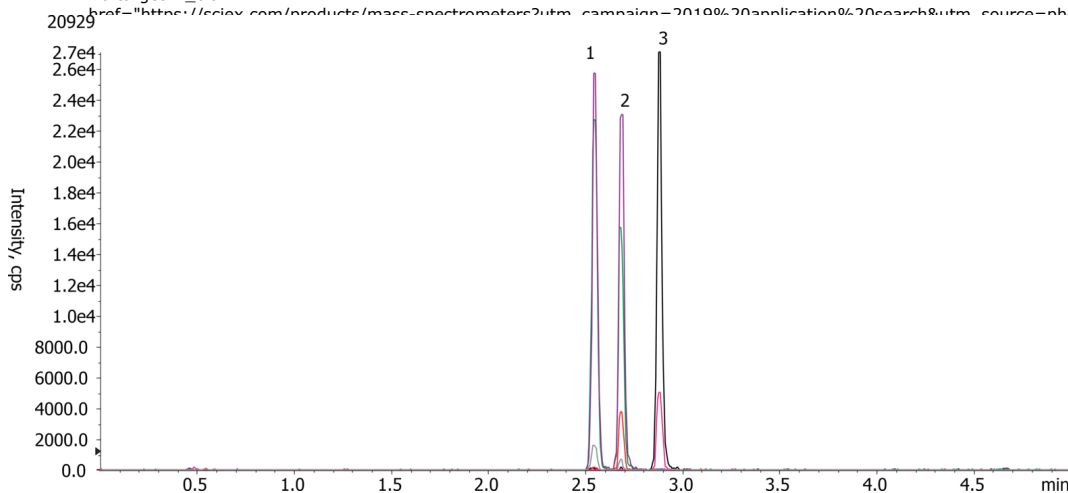


T3/T4 Plasma Extract by LC/MS/MS on Kinetex C18, 2.6 μ m, 75x2.1 mm**Column:** Kinetex[®] 2.6 μ m C18 100 Å, LC Column 75 x 2.1 mm, Ea**Dimensions:** 75 x 2.1 mm ID**Order No:** 00C-4462-AN**Elution Type:** Gradient**Eluent A:** 0.05% Formic Acid in DI H₂O**Eluent B:** 50:50 MeOH:ACN

Gradient Profile:	Step No.	Time (min)	Pct A	Pct B
	1	0	70	30
	2	2.5	30	70
	3	3	30	70
	4	3.01	10	90
	5	4	10	90
	6	4.01	70	30
	7	5.5	70	30

Flow Rate: 600 mL/min**Col. Temp.:** ambient**Detection:** Mass Spectrometer (MS) @ amu (ambient)**Detector Info:** SCIEX**Products used in this application:****ANALYTES:****1** T3

Retention Time: 2.54 min

2 Rev T3

Retention Time: 2.68 min

3 T4

Retention Time: 2.88 min



Sample Preparation Details

for HPLC Application ID No.: 20929

T3/T4 Plasma Extract by LC/MS/MS on Kinetex C18, 2.6 μ m, 75x2.1 mm

PRODUCT DESCRIPTION:

StrataTM-X-C 33 μ m Polymeric Strong Cation, 60 mg / 3 mL, Tubes , 50/Pk

Order No.: 8B-S029-UBJ

SOLID PHASE EXTRACTION (SPE) PROCEDURE:

Note: The solvent volumes shown below are for a 60 mg bed mass.

The solvent volumes will need to be adjusted for a smaller or larger bed mass.

Condition:

Load:

Wash:

Dry:

5 min under max vac

Elute:

Final Prep and Analysis:

Inject: 40 μ L on HPLC Mass Spectrometer (MS) @ amu (ambient)

ANALYTES:	Spiked Conc. (ng/mL)	Log P	pKa	% Rec	%RSC (n=0)
1 T3	1				
2 Rev T3	1				
3 T4	1				

Note: This method is designed as a convenient starting point for further investigation and can be tailored to meet your extraction goals.
Call your local Phenomenex Representative for assistance in method development and optimization techniques.

©2025 Phenomenex Inc. All rights reserved.

For more information contact your Phenomenex Representative at info@phenomenex.com



Phenomenex products are available worldwide.

www.phenomenex.com.cn

info@phenomenex.com