

GC Application

ID No.: 22668

EPA 552.2 by GC/ECD on ZB-CLPesticides-1 (Helium Gas)

Column: Zebtron ZB-CLPesticides-1 Column 30m x 0.32mm x 0.32µm , Ea

Phase: Proprietary Pesticides Phase

Dimensions: 30 meters x 0.32 mm x 0.32 µm

Order No: 7HM-G028-51

Oven Profile: 35 °C for 4 min to 250 °C @ 15 °C/min, hold 5 min

Carrier Gas: Constant Flow Helium, 25 cm/sec

Injection: Splitless :1 1 µL @ 250°C

Detection: Electron Capture (ECD) (300°C)

Analyst Note: 1.0 µL pulsed splitless @ 25 psi for 0.75 minutes. Analytes are various concentrations in ethyl acetate:

1. Methyl chloroacetate (1500 ng/mL)
2. Methyl bromoacetate (1000 ng/mL)
3. Methyl dichloroacetate (1500 ng/mL)
4. Dalapon methyl ester (1000 ng/mL)
5. Methyl trichloroacetate (500 ng/mL)
6. 1,2,3-Trichloropropane (4000 ng/mL)
7. Methyl bromochloroacetate (1000 ng/mL)
8. Methyl bromodichloroacetate (1000 ng/mL)
9. Methyl dibromoacetate (500 ng/mL)
10. Methyl chlorodibromoacetate (2500 ng/mL)
11. 2,3 dibromopropionate (2000 ng/mL)
12. Methyl tribromoacetate (5000 ng/mL)

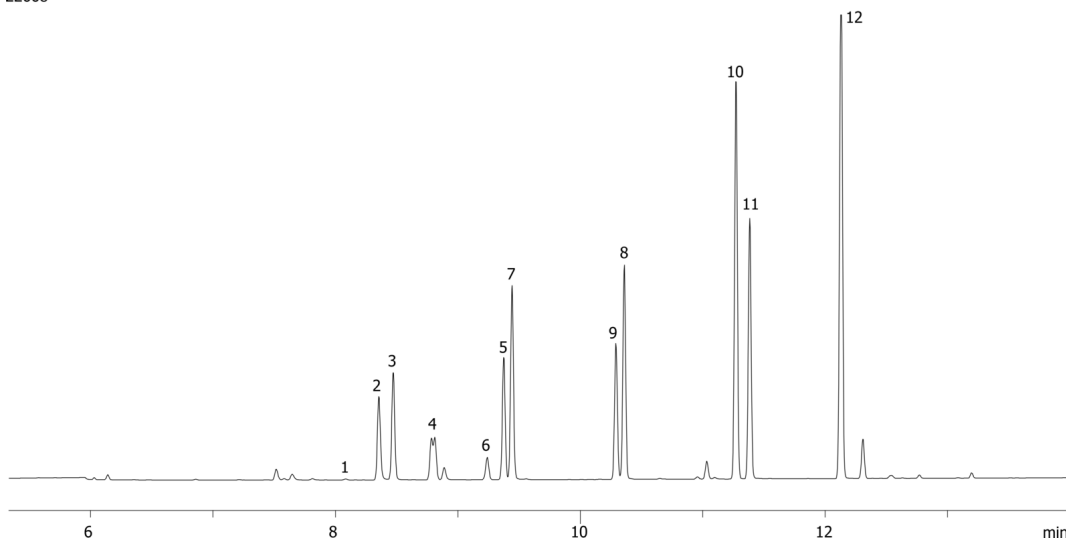
Y-Connector: AG0-4717 (Fused Quartz)
Guard Column: 7AM-G000-00-GZ0 (5 m Z-Guard[™])
Liner: AG0-8499 (Single Taper with Wool at Bottom)
Septum: AG0-4696 (PhenoRed[™]-400)
Inlet Seal: AG0-8620 (Gold-Plated Easy Seal[™])



Products used in this application:



22668



EPA 552.2 by GC/ECD on ZB-CLPesticides-1 (Helium Gas)

ANALYTES:

- 1 Methyl monochloroacetate
- 2 Methyl monobromoacetate
- 3 Methyl dichloroacetate
- 4 Dalapon methyl ester
- 5 Methyl trichloroacetate
- 6 1,2,3-Trichloropropane (IS)
- 7 Methyl bromo(chloro)acetate
- 8 Methyl bromodichloroacetate
- 9 Methyl dibromoacetate
- 10 Methyl chlorodibromoacetate
- 11 Methyl 2,3-dibromopropionate (SS)
- 12 Methyl tribromoacetate

