

## Mycotoxins extracted from corn using roQ by LC/MS/MS (Negative mode)

**Column:** Kinetex® 2.6 µm XB-C18 100 Å, LC Column 50 x 2.1 mm, Ea

**Dimensions:** 50 x 2.1 mm ID

**Order No:** 00B-4496-AN

**Elution Type:** Gradient

**Eluent A:** 5 mM ammonium acetate w/ 0.5% acetic acid

**Eluent B:** 5 mM ammonium acetate in methanol w/ 0.5% acetic acid

Gradient Profile:	Step No.	Time (min)	Pct A	Pct B
	1	0	95	5
	2	2	95	5
	3	5	20	80
	4	5.2	2	98
	5	8	2	98

**Flow Rate:** 0.45 mL/min

**Col. Temp.:** ambient

**Detection:** Tandem Mass Spec (MS-MS) @ (ambient)

**Detector Info:** API 5000

**Analyst Note:** roQ extraction:

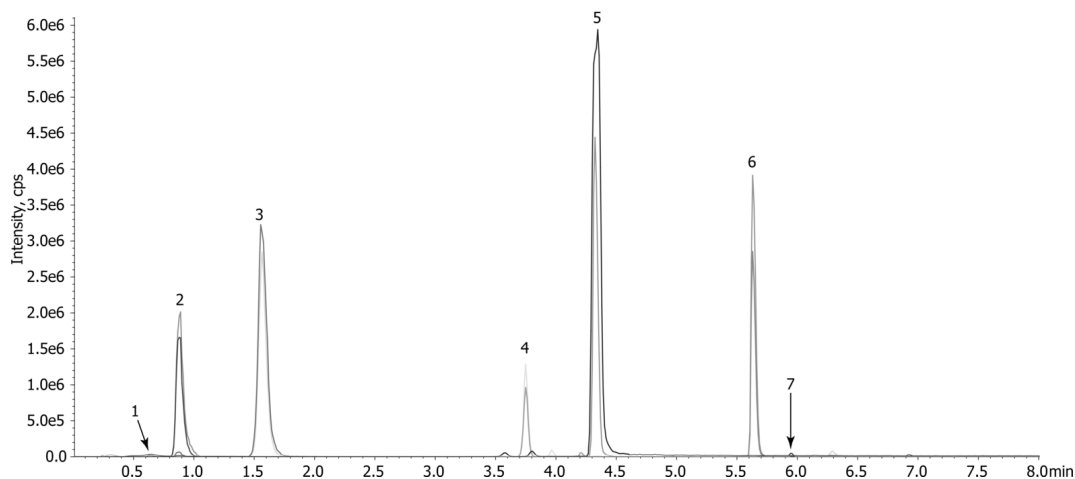
- 1) 5 g of corn is extracted using KSO-8909 with 10 mL of water and 10 mL of ACN with 1.0 % formic acid.
2. KSO-8924 is used for dSPE clean up.



Products used in this application:



22712



### ANALYTES:

- 1 Patulin**  
Retention Time: 0.65 min
- 2 Nivalenol**  
Retention Time: 0.88 min
- 3 Deoxynivalenol**  
Retention Time: 1.57 min
- 4 Fusarenon-X**  
Retention Time: 3.76 min
- 5 3-Acetyldeoxynivalenol**  
Retention Time: 4.34 min
- 6 Zearalenone**  
Retention Time: 5.64 min
- 7 Verruculogen**  
Retention Time: 5.96 min

©2025 Phenomenex Inc. All rights reserved.

For more information contact your Phenomenex Representative at [info@phenomenex.com](mailto:info@phenomenex.com)



Phenomenex products are available worldwide.

[www.phenomenex.com.cn](http://www.phenomenex.com.cn)

[info@phenomenex.com](mailto:info@phenomenex.com)