

Phospholipid Removal Novum EtOAc Elution(Zoomed)

Column: Kinetex® 2.6 µm C18 100 Å, LC Column 50 x 2.1 mm, Ea

Dimensions: 50 x 2.1 mm ID

Order No: 00B-4462-AN

Elution Type: Gradient

Eluent A: 0.1% Formic Acid in Water

Eluent B: 0.1% Formic Acid in Methanol

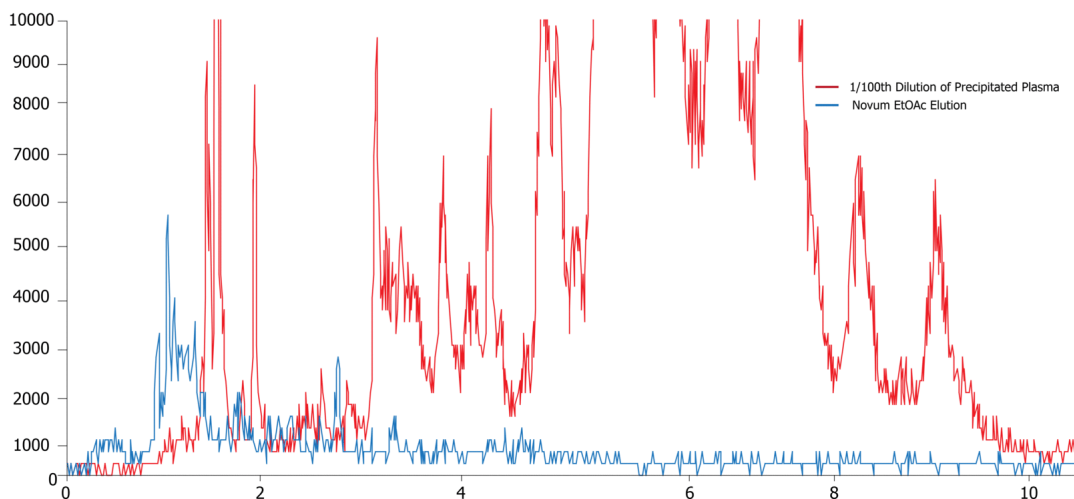
Gradient Profile:	Step No.	Time (min)	Pct A	Pct B
	1	0	40	60
	2	0.5	5	95
	3	15.5	5	95
	4	15.51	40	60
	5	19.5	40	60

Flow Rate: 400 µL/min

Col. Temp.: ambient

Detection: Mass Spectrometer (MS) @ 184 amu (425 °C)

Analyst Note: 22730
Extracted sample was prepped with Phenomenex Novum SLE Plate (400 µL sample Load) Step 1: 400 µL Dilute Plasma (50/50) to the plate. Step 2: Elute with 1800 µL of EtOAc (two steps, 900 µL each)



Products used in this application:



ANALYTES:

- 1 Phospholipid Profile

