

## Bupropion Extracted from Urine using Strata X-CW and Kinetex 5u EVO C18

**Column:** Kinetex® 5µm EVO C18 100 Å, LC Column 150 x 4.6 mm, Ea

**Dimensions:** 150 x 4.6 mm ID

**Order No:** 00F-4633-E0

**Elution Type:** Gradient

**Eluent A:** 5mM Ammonium Bicarbonate pH 9.0

**Eluent B:** Methanol

Gradient Profile:	Step No.	Time (min)	Pct A	Pct B
	1	0	50	50
	2	10	20	80

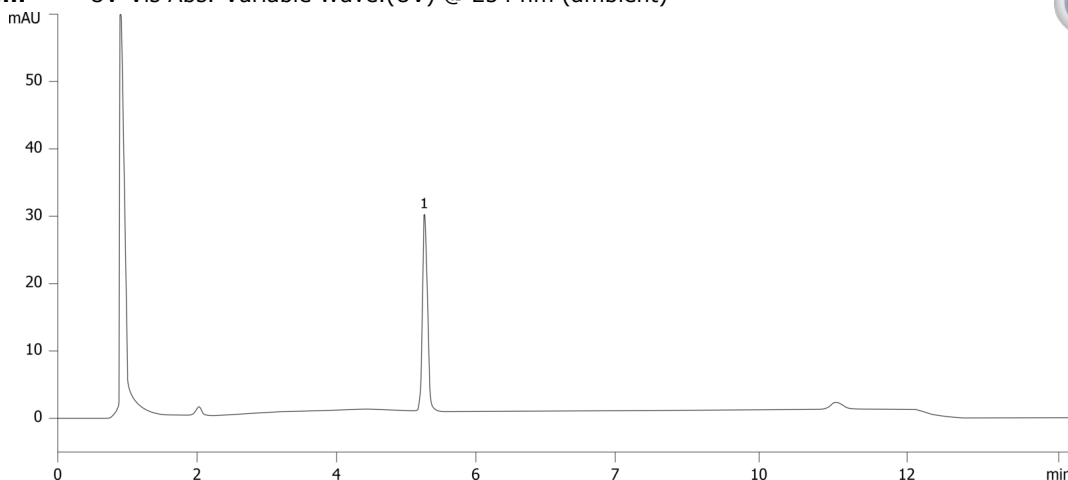
**Flow Rate:** 1 mL/min

**Col. Temp.:** ambient

**Detection:** UV-Vis Abs.-Variable Wave.(UV) @ 254 nm (ambient)



Products used in this application:



### ANALYTES:

1 Bupropion



# Sample Preparation Details

for HPLC Application ID No.: 23095

## Bupropion Extracted from Urine using Strata X-CW and Kinetex 5u EVO C18

### PRODUCT DESCRIPTION:

Strata™-X-CW 33 µm Polymeric Weak Cation, 60 mg / 3 mL, Tubes , 50/Pk

Order No.: 8B-S035-UBJ

### SOLID PHASE EXTRACTION (SPE) PROCEDURE:

**Note:** The solvent volumes shown below are for a 60 mg bed mass.

The solvent volumes will need to be adjusted for a smaller or larger bed mass.

#### Condition:

#### Load:

#### Wash:

#### Dry:

5 minutes

#### Elute:

#### Final Prep and Analysis:

Inject: 2 µL on HPLC UV-Vis Abs.-Variable Wave.(UV) @ 254 nm (ambient)

ANALYTES:	Spiked Conc. (ng/mL)	Log P	pKa	% Rec	%RSC (n=0)
1 Bupropion	0				

**Note:** This method is designed as a convenient starting point for further investigation and can be tailored to meet your extraction goals.  
Call your local Phenomenex Representative for assistance in method development and optimization techniques.

©2025 Phenomenex Inc. All rights reserved.

For more information contact your Phenomenex Representative at [info@phenomenex.com](mailto:info@phenomenex.com)



Phenomenex products are available worldwide.

[www.phenomenex.com.cn](http://www.phenomenex.com.cn)

[info@phenomenex.com](mailto:info@phenomenex.com)