

Chiral Separation of 2-Bromo-1-Indanone on Lux 5µm i-Cellulose-5

Column: Lux® 5 µm i-Cellulose-5, LC Column 250 x 4.6 mm, Ea

Dimensions: 250 x 4.6 mm ID

Order No: 00G-4756-E0

Elution Type: Isocratic

Eluent A: Hexane

Eluent B: THF

Gradient Profile:	Step No.	Time (min)	Pct A	Pct B
	1	0	85	15

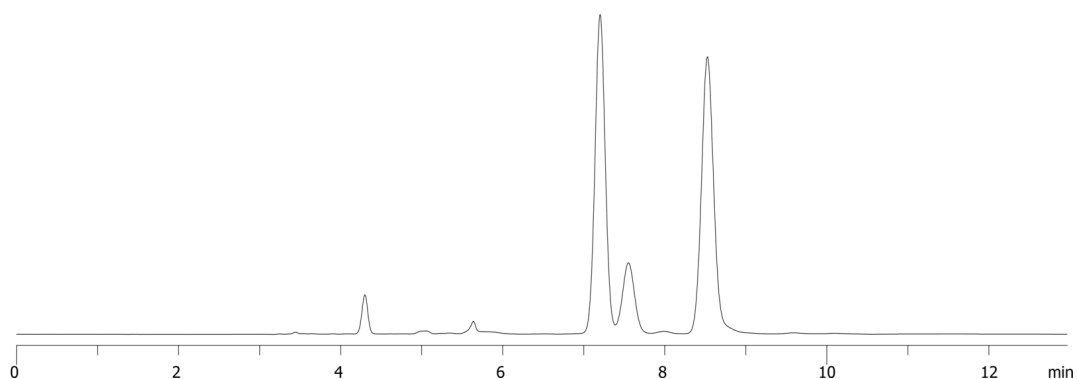
Flow Rate: 1 mL/min

Col. Temp.: ambient

Detection: UV-Vis Abs.-Variable Wave.(UV) @ 254 nm (ambient)
23883



Products used in this application:



ANALYTES:

1 2-Bromo-1-Indanone

Retention Time: 7.2 min

2 2-Bromo-1-Indanone

Retention Time: 8.524 min

