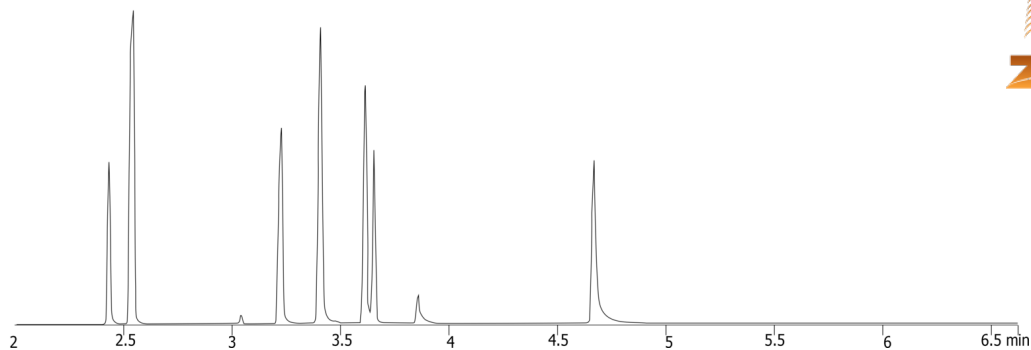


**Benzodiazepines extracted using Strata Screen C 150mg/3cc from Urine (TIC)****Column:** Zebtron<sup>™</sup> ZB-5MSi, GC Cap. Column 10 m x 0.18 mm x 0.18  $\mu$ m, Ea**Phase:** 5% Phenyl 95% Dimethylpolysiloxane**Dimensions:** 10 meters x 0.18 mm x 0.18  $\mu$ m**Order No:** 7CD-G018-08**Oven Profile:** 200 to 340 over 25C/min hold for 1 minute**Carrier Gas:** Constant Flow Helium, 17.2 mL/min**Injection:** Split 20:1 1  $\mu$ L @ 260°C**Detection:** Mass Spectrometer (MS) (320°C)

23893

**Products used in this application:**

## Benzodiazepines extracted using Strata Screen C 150mg/3cc from Urine (TIC)

### ANALYTES:

- 1 Diazepam
- 2 D5-Nordiazepam
- 3 Nordiazepam
- 4 D5-Oxazepam
- 5 Oxazepam
- 6 D5-Temazepam
- 7 Temazepam
- 8 Clonazepam
- 9 Lorazepam
- 10 Alprazolam
- 11 D5-alpha-Hydroxyalprazolam
- 12 Alpha-Hydroxyalprazolam



# Sample Preparation Details

for GC Application ID No.: 23893

## Benzodiazepines extracted using Strata Screen C 150mg/3cc from Urine (TIC)

### PRODUCT DESCRIPTION:

Strata® Screen-C (55 µm, 70 Å), 150 mg / 3 mL, Tubes , 50/Pk

Order No.: 8B-S016-SBJ

### SOLID PHASE EXTRACTION (SPE) PROCEDURE:

**Note:** The solvent volumes shown below are for a 150 mg bed mass.

The solvent volumes will need to be adjusted for a smaller or larger bed mass.

#### Condition:

#### Load:

#### Wash:

#### Dry:

Dry for 5 mins at 15" Hg

#### Elute:

#### Final Prep and Analysis:

Reconstitute in 100uL Ethyl Acetate and 50uL MTBSTFA; Cap and incubate @ 60C for 20minutes then transfer to amber vial with insert. Inject 1uL.

Inject: 1 µL on HPLC Mass Spectrometer (MS) @ amu (320°C)

ANALYTES:	Spiked Conc. (ng/mL)	Log P	pKa	% Rec	%RSC (n=0)
1 Diazepam	0				
2 D5-Nordiazepam	0				
3 Nordiazepam	0				
4 D5-Oxazepam	0				
5 Oxazepam	0				
6 D5-Temazepam	0				
7 Temazepam	0				
8 Clonazepam	0				
9 Lorazepam	0				
10 Alprazolam	0				
11 D5-alpha-Hydroxyalprazolam	0				
12 Alpha-Hydroxyalprazolam	0				

**Note:** This method is designed as a convenient starting point for further investigation and can be tailored to meet your extraction goals. Call your local Phenomenex Representative for assistance in method development and optimization techniques.

©2025 Phenomenex Inc. All rights reserved.

For more information contact your Phenomenex Representative at [info@phenomenex.com](mailto:info@phenomenex.com)



Phenomenex products are available worldwide.

[www.phenomenex.com.cn](http://www.phenomenex.com.cn)

[info@phenomenex.com](mailto:info@phenomenex.com)